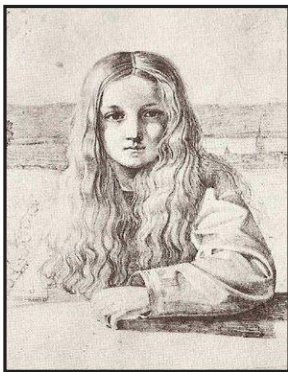




# Anthroposophical Society PORTLAND BRANCH

Newsletter

April 2019



## Kaspar Hauser and the Struggle for the True Identity of Mankind

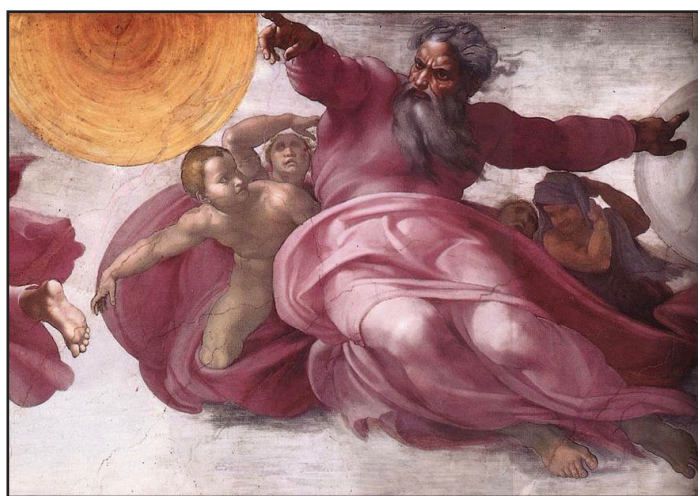
***If Kaspar Hauser had not lived and died as he did, the bond connecting the spiritual world to the earth would be completely torn asunder.*** This statement of Rudolf Steiner's is all the more startling because Kaspar Hauser is so little known, even among Anthroposophists. Dr. Steiner would seem to indicate that in this time of intense battles for our attention, it is worthwhile to turn our attention and thinking forces to the mystery of this being's incarnation.

The Portland Branch Council is pleased to announce a rare opportunity to hear from someone who has looked deeply and for a long time into the mystery of Kaspar Hauser, and is able to bring alive the circumstances of this significant incarnation. Eckart Böhmer will speak on two evenings: **April 5 at 7:30 pm at Bothmer Hall, and April 6 at Cedarwood School, after the 7pm Eurythmy performance, Fire.** Herr Böhmer founded and directs the Kaspar Hauser Festival in Ansbach, Germany where Kaspar Hauser was assassinated and died.

**T**he prince who was to have become the Grand Duke of Baden was born on Michaelmas, 1812. He was never named, as it was claimed that he had died a few days later. From his birth this child was in grave danger from various factions, who had their own ambitions to power and the throne. He was also set upon by dark forces who understood the magnitude of the destiny for transforming Europe that was his.

Continued on page 2

## Why the Relationship of the Sun and Moon are So Important for Easter!



The Sun and the Moon Michelangelo

**S**ome of you may have read the piece in our March newsletter questioning the true date for Easter this year. This question came up because the equinox fell on March 20 this year, with a full moon coming four hours later – and the method for determining Easter is said to be to place it on the first Sunday after the first full moon after the Spring equinox.

However, members of our Anthroposophical community nationwide have been thinking deeply on the question and are offering further perspectives. Mary Stewart Adams has been instrumental in taking the subject further, with a look at the esoteric significance of the relationship of the sun and the moon during this Easter time, which mirror the shift with the coming of Christ from “lunar-based religions and practices to the Sun-based...Typically the first Full Moon of Spring moves across the celestial equator before it achieves Full Phase, and there, from below the celestial equator, it reflects the return, and ascendancy, of the Sun, which

Continued on page 3

In 1828 a fifteen-year-old youth appeared in the public square in Nuremberg. He had clearly been subjected to the worst kind of treatment, which had been intended to destroy his soul capacities. *He appeared incoherent and underdeveloped, having been imprisoned and cut off from all human contact as a child. He went on to display great purity and spiritual maturity during the short time he spent in the company of others, until his brutal murder at the age of twenty-one. Who was this young man who spent almost all of his childhood in isolation? Why was he locked away? Where did his life begin? In the last month of his life, Rudolf Steiner identified the matter of Kaspar Hauser's origin as one of the great questions of history.*<sup>1</sup>

Those who have looked deeply into this matter, and conducted research into the primary documents of the time, as well as DNA tests in this time, could only conclude that the Prince of Baden and Kaspar Hauser are one and the same individuality.

Much of what attracts our interest is a consideration of what he was in fact able to accomplish for humanity given both the exoteric and the esoteric opposition that he was subjected to – *a moving triumph of the human spirit over darkness and adversity, which has both historical and contemporary relevance.*<sup>2</sup> The mystery is

really only made comprehensible by means of spiritual research and understanding, and thus serves to remind us of spiritual reality. Just one example is the profound capacity for empathy that he brought into the world, making it a possibility for us all.

It is interesting to note that both a smear campaign against Kaspar and an effort to erase him from history continues to this day.

<sup>1</sup>Description for Terry Boardman's book, *Kaspar Hauser, Where Did He Come From?*

<sup>2</sup>Ibid

Some very good resources from an anthroposophical perspective:

**Kaspar Hauser: The Struggle for the Spirit**

by Peter Tradowsky

**Kaspar Hauser: Where Did He Come From**

by Terry Boardman

**Kaspar Hauser and Karl König** by Karl Köni

## Rudolf Steiner on Kaspar Hauser From The Apocalypse of St. John, Introductory Lecture



What today we call logical thought, intellect, understanding, has only evolved late in man's history. Much stronger were certain forces in him which are already beginning to decline, such, for instance, as memory. In an earlier age memory was far more

developed than it is now. With the growth of the intellect in mankind, memory has stepped essentially into the background.<sup>1</sup> If one uses some measure of practical observation one can recognize that what Spiritual Science relates is not said without foundation. People might assert that if that were true about memory, then a person remaining backward in development by some accident, should be backward least of all in memory. It

Contentment is the greatest miracle worker.  
It transforms water into wine, grains of sand into pearls,  
rain drops into balsam, poverty into wealth,  
the smallest into the greatest, the meanest into the most noble,  
the earth into a paradise.  
It is a beautiful heart that, in all its stirrings,  
remains in purest harmony with itself;  
a beautiful life it is whose deeds  
are in full accord with one other.

- Kaspar Hauser

could also be claimed that if intellectuality were fostered in a person artificially kept back, then his memory would suffer. Here in this city a characteristic case of this very nature is to be found.

Professor Daumer, whom one must hold in the highest esteem, observed this case very thoroughly. It was the case of that human being, so enigmatic for many people, who was once placed into this city in a mysterious way, and who in just as mysterious a way met his death in Ansbach. An author, in order to indicate the mystery of his life, wrote that as he was carried out to burial the sun was setting on the one horizon and the moon was rising on the other. I speak, as you know, of Kaspar Hauser. If you disregard all the pros and cons that have been asserted, if you look only at what has been fully verified, you will know that this foundling — who was one day simply there in the street, and who since he did not know whence he came, was called the Child of Europe — could neither read nor write when he was found.

At an age of twenty years he possessed nothing of what is gained through the intellect but he had a remarkable memory. As they began to instruct him, as logic entered his soul, his memory disappeared. This transition in consciousness was accompanied by something else. He possessed at first an incredible, an entirely inborn truthfulness and it was precisely in this truthfulness that he went more and more astray. The more he nibbled, so to say, at intellectuality, the more it vanished.

There would be many things to study were we to enter deeply into this human soul which had been artificially held back. It is not difficult for the student of Spiritual Science to credit the popular tradition, so unacceptable to the learned people of today, which relates that while Kaspar Hauser still knew nothing, while he still had no idea that there were beings besides himself of different form, he exercised a remarkable effect upon quite savage creatures. Savage animals humbled themselves and became mild, something streamed from him that made such beasts gentle, although they savagely attacked anyone else. We could in fact penetrate deeply into the soul of this remarkable personality, so enigmatic to many, and you would see how things that cannot be explained from ordinary life are led back through Spiritual Science to spiritual facts. Such facts cannot be learnt by speculation but only by spiritual observation, though they are comprehensible to an unbiased and logical thinking.

“His Death is a mystery.”<sup>2</sup> Something of the mystery can be made clear if Kaspar’s death is understood as the conclusion of a path of sacrifice which raised him to becoming a companion of Christ. His death achieved a cosmic significance for man and for the earth. Let us conclude with a verse in which Rudolf Steiner spoke of men of genius and of what we owe to these leading spirits:

They shine like stars  
in the heavens of eternal being,  
the God-sent human spirits.  
May it be that all human souls  
in the realm of earth will come to gaze  
on the radiance of their flames.

<sup>1</sup>From articles written by Peter Tradowsky for *Das Goetheanum*, nos. 3-8, 1976, translated and printed in *The Golden Blade*.

<sup>2</sup> *Ibid*

Easter continued from page 1

would be the celestial picture that stands behind the Christian Mystery that was wrought on behalf of humanity at Golgatha.” It is the second full moon after the equinox which is in this position, not the first. Drs. Ross Rentea and Mark Kamsler of the Lili Kolisko Institute indicate below where Mary’s work has taken them in their thinking.

Mary suggests that we ‘take up this season as an opportunity for spiritual scientific research, to live into and through the moments of Equinox and Full Moon, and even of next month’s Full Moon and Easter observance, and ask ourselves if and how we found an answer.’



Dear Friends,

We are grateful for all the responses that we have received to our initial communication about the so-called Easter paradox.

Having received a truly helpful pointer from our anthroposophical friend and observational astronomer/star lore historian, Mary Stewart Adams (thank you again Mary), Mark and I have decided to rethink and rework the problem and we would like to share these results with you.

To remind ourselves, the Easter formula consists of designating Easter as the first Sunday after the first full moon after the spring Equinox.

So let us take this one step at a time. The formula begins with the requirement that spring is starting. What that means—there is not much disagreement here—is that the Sun has crossed over the celestial equator, north of it, so that after that movement, when a roughly equal length of the day and the night occurs, the days will become longer and longer as the Sun moves towards summer. This Equinox passage can easily be determined astronomically and it happens sometime on either March 20 or 21.

The second part of the Easter rule is the full moon which now has to follow this spring Sun.

We are touching here on the crux of the problem. Understanding this part of the problem has been very new to us also and we hope that by sharing our work with all we may help others also in solving the so-called Easter paradox problem.

The vital question here is, surprisingly enough, and strangely enough as it may first sound: Which is the full moon that corresponds to the spring Equinox Sun that has just arisen above the celestial equator?

Once one knows the answer, it really seems self-evident and logical. The full moon that corresponds to this sun must be a moon that is full and has just gone under the celestial equator. Simply put it cannot be a full moon that



is still above the line of the celestial equator because then the straight line going from it to the Sun would be going to a sun that is still under the celestial equator, meaning that it corresponds to a Sun that is before spring.

It turns out that the facts this year are that the declination of the full moon on March 20 (a full moon that follows by four hours the Sun of the spring Equinox) is still about 4° above the celestial equator and thus, as stated above, must belong (as a full moon) to a previous Sun, not the Sun of the spring Equinox. This particular full moon of March 20th will go "South", i.e. below the celestial equator line only on March 22 by which time it is not full anymore. As Mary Stewart Adams put it in an email to us, the full moon of March 20th is still more of a "rival" to the new Sun rather than a "witness".

It is only the moon of April 19 (which appears now significantly, and if I may say so gloriously, on Good Friday, April 19) that is the full moon that is clearly under the celestial zodiac and reflects the spring forces of the arisen Sun.

There is one more cardinal point to make here - without going into all the details (which we have however calculated ourselves in painstaking detail). The moon of March 20 is still right at the end of the tail of the constellation Leo- incidentally, has to be because this Moon is still above the celestial equator line- and thus it is not in the constellation Virgo as the full moon before Easter. The full moon in Virgo will be right under the star Spica on 19th of April.

For all of us, and especially for anthroposophical doctors, this Pisces and Virgo Axis is of real significance. Rudolf Steiner points out for the first time in a lecture of November 25, 1917 that this Axis is the Axis "of the Good", of healing.

As the morning moon begins to wane again in the time before Easter it forms a chalice into which the healing forces that have become manifest in the sky in the Axis of the Sun and the Moon, the Grail forces, can unite themselves with the Powers of the Risen Christ and become manifest all the way into the egos of the human beings on the Sunday of Easter.

Based on the above we have decided to celebrate Easter on April 21st of this year.

However, we will continue as announced to do our germination experiments and will be interested to see what observations can be gleaned from the behavior of the etheric world of the plants.

Wishing all an intense connection with the Easter forces,  
Ross Rentea MD and Mark Kamsler MD

## Please Support Eurythmists Attending Summer Dental Conference

### Housing Needed

Portland will be hosting eurythmists at the Portland Waldorf School for an Athena Therapeutic Eurythmy Dental conference with Mareike Kaiser from Austria on July 21-28. Low or no cost housing is needed for those coming from out of town. If you are able to offer a space please contact:

Christine Badura at 707-494-6741  
or badura88@hotmail.com. She will want to know your rates, whether you have pets, private or shared bathroom, etc. For information about the conference see the Branch calendar, call 503-896-3345 or visit [www.therapeuticeurythmy.org](http://www.therapeuticeurythmy.org)

## The Portland Branch of the Anthroposophical Society Invites you to

### Save The Dates!

See the attached calendar & fliers  
for more information and more events

Friday, April 5 & Saturday April 6

Kaspar Hauser and the Struggle for the True Identity of Mankind with Eckart Böhmer

April 14, 1:30PM

Palm Sunday, Branch Easter Observance

Sunday April 28, 12PM

Portland Branch Annual Gathering and Potluck



# Calendar of the Soul

## Note:

As there are more than 52 weeks between Easters this Soul Calendar year, we are adopting the schedule for the end of this year from the Kolisko Institute. We will devise a schedule for the coming year which takes into account the number of weeks between Easters.

## Week 50

To the human I there speaks,  
Mightily itself revealing,  
And setting free the forces of its nature  
Joy in growth of world existence:  
'On you my life bestowing  
From its enchanted bondage  
I reach my own true aim.'

## Week 51

Into man's inner being  
The richness of the senses flows;  
The spirit of the world thus finds himself  
In mirror'd image of the human eye,  
Which from that self same Spirit  
Must create its strength anew.

## Week 52

When from the soul's deep ground  
The Spirit turns to the life of worlds  
And beauty wells from widths of space,  
Then from the farthest Heavens flows  
Life's strength into the human form  
And weds in mighty working  
The Spirit's being to the life of man.

## Easter Mood

When from the world's wide realms  
The sun speaks to the human mind,  
And joy from depths of soul  
Unites with light in gazing,  
Then thoughts from selfhood's sheath  
Stream into far spread spaces,  
And dimly bind  
Man's being to the Spirit's life.

Calendar translation  
by Liselotte and William Mann

**The Portland Branch Newsletter** is published monthly to serve Branch members and friends. To learn more about the Portland Branch of the Anthroposophical Society, contact Diane Ramage at 971-271-7479.

**To submit an article or a calendar item** email it to Valerie Hope, [valerieannhpx@aol.com](mailto:valerieannhpx@aol.com). The deadline for submissions is the 15th of the month preceding publication. Items selected for publication may be edited for style, content and length.

## To sign up for our newsletter/email list go to:

<http://www.portlandbranch.org> and click on the button at the top of the right hand column on the home page.

The newsletter and calendar are posted on the Branch website, [www.portlandanthroposophy.org](http://www.portlandanthroposophy.org). Paper copies are available at the Pohala and Healthbridge Clinics; and the Cedarwood, Michael & Portland Waldorf Schools, and Swallowtail School.

**Our current newsletter team:** Design, layout, and illustrations Christopher Guilfoil; proofreading, Lauren Johnson; printing & distribution, Jerry Soloway; columnists Anya Thaker, & Lauren Johnson; webmaster Angelica Hess, treasurer, Ruth Klein; editor, Valerie Hope.

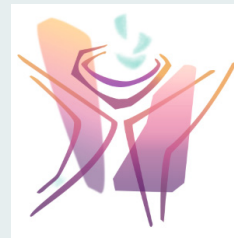
## The Portland Branch thanks the following Members & Friends for their Dues and Generous Donations in 2019:

Cyndia Ashkar, Christine Badura, Sandra Burch, Wes Burch, James Conlon, Jeremy Davis, Ruth Klein, Tom Klein, Judith Levin, Martin Levin, Brian McClure, Robin O'Brien, Padeen Quinn, Jeff Rice, Jerry Soloway, Rebecca Soloway, Elizabeth Webber

## We will gratefully receive your Branch membership dues (\$50 or what you can afford).

Send to: The Portland Branch c/o Ruth Klein  
12286 SE 41st Court, Milwaukie, OR 97222

We would like to gratefully acknowledge the following who generously provide spaces for our many activities: Dr. Joan and John Takacs for their long-standing donation of Bothmer Hall; the Portland Waldorf School; and the Cedarwood School.



## Another Way to Donate to the Portland Branch

If you shop at Amazon and use the following link, a small donation, .5% of the price of your eligible purchases will be donated to the Portland Branch. [smile.amazon.com/ch/93-1269233](https://smile.amazon.com/ch/93-1269233)

**First Class of the School of Spiritual Science**

**Sunday, April 14, 9:30 am sharp • Lesson VIII • (no admittance after the class starts) • Bothmer Hall, 5915 SE Division St, Portland, 97206** **Blue card required.** • Lessons are normally held on the second Sunday of each month • Contact Cheri Munske at 503-484-4133, or Rebecca Soloway at 516-850-1027.

**Portland Branch Council Meeting**

**Monday, April 8, 7:00 pm • 2606 SE 58th Ave. • Contact Valerie Hope, 503-775-0778, [valerieannhpx@aol.com](mailto:valerieannhpx@aol.com)**

All Branch members are welcome to attend, and/or call us with agenda items, proposals, suggestions, or to observe. Please contact Valerie to let her know you're coming. Meetings are normally held on the second Monday of the month.

**Portland Eurythmy and the Portland Branch are joining forces - bringing together two significant events - so you won't have to choose between them!**

**Each group has two events. Only the Saturday evening events have been brought together:**

**Portland Eurythmy: Saturday April 6 at Cedarwood School**

- 3:00 performance of *Rainbow Crow*
- 7pm program, *Fire*

**Portland Branch: *Kaspar Hauser and the Struggle for the True Identity of Mankind*, with Eckart Böhmer**

- Friday April 5, 7:30 pm at Bothmer Hall: *The Unfulfilled Mission of the Hereditary Prince*
- Saturday April 6, 8pm after the Eurythmy performance at Cedarwood School: *The Fulfilled Mission of Kaspar Hauser*

See details below.

**Kaspar Hauser and the Struggle for the True Identity of Mankind: Two presentations with Eckart Böhmer**

**Friday April 5, 7:30 PM, Bothmer Hall, 5915 SE Division St. *The Unfulfilled Mission of the Hereditary Prince***

**Saturday April 6, 8 pm, Cedarwood School, 3030 SW 2<sup>nd</sup> Ave. (after *Fire* Eurythmy performance) *The Fulfilled Mission of Kaspar Hauser***

**\$15 each lecture • Contact Valerie Hope, 503-775-0778, [valerieannhpx@aol.com](mailto:valerieannhpx@aol.com)**

In speaking of Kaspar Hauser Rudolf Steiner said, *If Kaspar Hauser had not lived and died as he did, then the contact between the earth and the heavenly world would have been completely severed.* This startling statement is all the more so because Kaspar Hauser is so little known even by many Anthroposophists. It is also interesting to note in this age of fake news and whopping untruths, that the smear campaign that was financed against him in his time continues to this day. Although the mission of this high individuality was thwarted by dark forces who kept him from transforming European society as had been intended, there was much that was accomplished during his very difficult life. Eckart Böhmer, who founded and directs the Kaspar Hauser Festival in Ansbach, Germany, and who after receiving a treasure-trove of research documents on the subject, founded the Kaspar Hauser Research Circle within the Karl-König Institute, will offer two lectures – the first detailing Kaspar's mission thwarted, the second the mission fulfilled.

**Portland Eurythmy is presenting two Eurythmy performances. The evening performance will precede the second Kaspar Hauser Lecture.**

**Cedarwood Waldorf School, 3030 SW 2<sup>nd</sup> Ave. • \$10 Students, \$15 Adults • Contact Don Marquiss, 503 626-7606, [marquiss.don@gmail.com](mailto:marquiss.don@gmail.com) or [portlandEurythmy.org](http://portlandEurythmy.org)**

**Saturday, March 6, from 3:00 to 3:30pm: *Rainbow Crow*, a native story for children of all ages** Our story 'Rainbow Crow' comes from the tribe of the Lenape and brings us the lovely tale of Rainbow Crow's courageous flight up to the Great Spirit to receive the fire in order to save the animals from the relentless Snow Spirit. This is a tale for the whole family!

**Saturday, March 6, 7 pm: *Fire!*** Our evening program "Fire" brings the magic of this element to you in pictures from the warmth of the hearth to the sparkling beauty of the Sun and the raw and dynamic experiences of the soul. With poems by Elsa Gidlow, Claude McKay, D. H. Lawrence and music pieces by Alexander Scriabin and Sergei Rachmaninoff and more.

**Balancing Our Three Human Intelligences: The Wisdom of Waldorf Education with Douglas Gerwin, Ph.D.**

Wednesday, April 10, 7:30pm and Thursday, April 11, 9:30am • Eugene Waldorf School, Art Building, 1350 McLean Blvd, Eugene, OR, 97405 • All are welcome. Suggested donation \$12. • Contact [marcia@wtee.org](mailto:marcia@wtee.org)

A talk and follow up discussion with Douglas Gerwin.

**Branch Easter Observance on Palm Sunday – The Easter Imagination**

Sunday, April 14, 1:00 pm, After First Class • Bothmer Hall, 5915 SE Division St. • Contact Valerie Hope, 503-775-0778, [valerieannhpx@aol.com](mailto:valerieannhpx@aol.com)

This timing allows those attending First Class, which ends at around 12 pm, to have time for some lunch before we begin. We will read some excerpts from Rudolf Steiner's *Easter Imagination* and together live into what it brings for a true experience of Easter. Lesley Cox has graciously agreed to lead us in The Halleluiah in eurythmy. Flier in March newsletter.

**Portland Branch Annual Gathering and Potluck – Rescheduled!**

Sunday, April 28, 12 pm • Bothmer Hall, 5915 SE Division St. • Contact Valerie Hope, 503-775-0778, [valerieannhpx@aol.com](mailto:valerieannhpx@aol.com)

This annual tradition is about more than a legal requirement – we come together to catch up with one another, to assess and celebrate the past and coming years, eat great food (it's wonderful to be in a community of good cooks and bakers), and enjoy an artistic activity. We will be graced this year with a musical performance by Soprano Angelica Hesse and Pianist Liz Kohl. We will also look at some thoughts about 'the new group souls' and how they relate to our working together.

**METAMORPHORA, Art Hall exhibit displaying work by artist Anca Hariton**

Thursday, March 7, through Thursday, May 9 • The Art Hall at Cedarwood Waldorf School, 3030 SW 2<sup>nd</sup> Ave. • Contact Robin Lieberman, 503-222-1192

Art exhibit featuring renderings of the artist's inspiration from the Hebrew creation stories.

**ATHENA Therapeutic Eurythmy Dental Conference with Mareike Kaiser, Austria**

Sunday, July 21 to Saturday, July 27 • Portland Waldorf School, 2300 SE Harrison St, Milwaukie OR 97222

This conference is for in training and trained therapeutic Eurythmists as well as any other trained therapists, dentists and physicians. Cost \$350.- for members, \$400.- for non-members. For more info call 503 896 3345 or visit

[www.therapeuticeurythmy.org](http://www.therapeuticeurythmy.org)

Low or no cost housing is needed for Eurythmists coming from out of town. If you are able to offer a space please contact Christine Badura at 707-494-6741 or [badura88@hotmail.com](mailto:badura88@hotmail.com) She will want to know your rates, whether you have pets, private or shared bathroom, etc.

**Christian Community Portland with Reverend Sanford Miller May 9-12 Stay tuned for more details.**

## Ongoing Local Activities and Study Groups

**First Class of the School of Spiritual Science • Second Sunday of the Month**

9:30 am sharp (no admittance after the class starts) • Bothmer Hall, 5919 SE Division St, Portland, 97206 • Blue card required. Contact Cheri Munske at 503 772-2632, or Rebecca Soloway (516) 850-1027

**Council Meetings of the Portland Branch • Second Monday of the month**

7-9 pm • 2606 SE 58th Ave., Portland • Contact Valerie Hope, (503) 775-0778, [valerieannhpx@aol.com](mailto:valerieannhpx@aol.com)

All Branch members are welcome to attend, and/or to call us with agenda items, proposals, suggestions, or to observe.

**School of Spiritual Science Study • Second Thursday of the Month**

*The First Class of the Michael School and its Christological Foundations* by S. Prokofieff • For Members of the School of Spiritual Science 7:30-9:00 pm • Contact Rebecca Soloway, [rrsoloway1@gmail.com](mailto:rrsoloway1@gmail.com) or 516-850-1027

**Christianity as Mystical Fact Study Group • First Monday of the Month**

7:45-9pm • Bothmer Hall, 5919 SE Division St., Portland 97206 • Contact Jerry Soloway 503-908-7615 or [jrsoloway@hotmail.com](mailto:jrsoloway@hotmail.com)  
Please join us in lively discussions centered on Rudolf Steiner's *An Outline of Esoteric Science*.

**Community Painting Tuesday Mornings**

8:45-10:00AM Tuesday morning painting group for adults, at the Portland Waldorf School. Watercolor painting and contemplative drawing exercises, focusing on color studies and seasonal moods. All levels welcome. Contact [cherimunske@gmail.com](mailto:cherimunske@gmail.com) to RSVP.



**Adult Eurythmy Class with Jolanda Frischknecht**

Tuesdays 6:30-8 pm • Takes place in Cedarwood Waldorf School, 3030 SW 2<sup>nd</sup> Ave. Portland 97201 • Cost: \$20/session; paid monthly, sliding scale on request • Contact Jolanda, [jolandamf44@gmail.com](mailto:jolandamf44@gmail.com), or 503-896-3345 Feel free to drop in, invite friends.

**Eurythmy for Waldorf Alumni: Wednesdays**

Study, 6:30-7:30 pm; Eurythmy; 7:30-8:30 pm • Eurythmy Room, Portland Waldorf School, 2300 Harrison St., Milwaukie • Contact Carrie Mass, [Carrie.mass@portlandwaldorf.org](mailto:Carrie.mass@portlandwaldorf.org) If you've ever attended a Waldorf High School, this is for you!

**Eurythmy, Portland Waldorf School Community: Wednesday Mornings**

8:45-9:30 am, Eurythmy Room, Portland Waldorf School, 2300 Harrison St., Milwaukie • Free - All are welcome. Contact: Carrie Mass, [Carrie.Mass@portlandwaldorf.org](mailto:Carrie.Mass@portlandwaldorf.org), 415-686-3791

**Pacific Eurythmy, Open Classes for the Community in Anthroposophy and the Arts: Monday Evenings**

For details please see our website, [www.PacificEurythmy.com](http://www.PacificEurythmy.com) or call Jolanda, 503-896-3345 or Carrie, 415-686-3791

**Festivals Study Group: First and Third Friday Mornings**

10:00 am-12:00 pm • 2606 SE 58<sup>th</sup> Ave, Portland • contact Suzanne Walker, 503-208-2426 [zzwalker@mac.com](mailto:zzwalker@mac.com)  
We are working with various of Dr. Steiner's lectures in an effort to better understand the festivals and how we may come to observe them according to his indications. This study is also greatly deepening our experience of the Calendar of the Soul and the cycle of the year. All are welcome.

**Developing the Self Through the Inner Work Path in Light of Anthroposophy by Lisa Romero • Friday Mornings beginning January 4**

9:15 – 11:00 am • contact Patricia Lynch at [patriciahomanlynch@gmail.com](mailto:patriciahomanlynch@gmail.com)  
A short painting exercise and reading. All are welcome!

**Man as Symphony of the Creative Word – Study Group • First and Third Tuesdays**

7:30-9 pm • 3046 NE 33rd Ave. Contact Donna Patterson and Bob Kellum 503-331-7393 • All are welcome

**Singing Circle at the Portland Waldorf School • Friday Mornings**

8:45-10:15 am • Portland Waldorf School, 2300 SE Harrison St., Milwaukie, in the Orchard Room • all voices are welcomed. Contact Julianne Renzema at [momartist@yahoo.com](mailto:momartist@yahoo.com). No practice during school breaks.

**Waldorf Education and Teacher Training Lectures and Courses**

Conducted throughout the year by the Micha-el Institute. Contact John Miles, 503-774-4946 [johncmiles@usa.net](mailto:johncmiles@usa.net)

**Waldorf Teacher Education, Eugene**

Two and Three year Career Training and Artistic Development Learn more at [www.WTEE.org](http://www.WTEE.org) or call (541) 514-7905



# Physical Medicine & Injury Rehabilitation



Susan Schmitt, M.D.  
Joan Takacs, D.O.  
John Takacs, D.O.



The clinic offers alternatively extended medicine including Physical Medicine and Rehabilitation and Comprehensive Family Practice. The physicians utilize holistic principles that include the Anthroposophical world conception and its medical modalities, movement principles from Spacial Dynamics®, Feldenkrais®, Intermuscular Stimulation (IMS), Musculoskeletal Ultrasound and refined hands-on techniques to augment alternative and mainstream medical approaches in diagnosis, treatment and prevention of illness and injury including work related injuries, personal injuries, motor vehicle injuries and sports injuries.

5909 SE Division Street, Portland, OR 97206

[www.anthroclinic.com](http://www.anthroclinic.com) 503-234-1531

curative painting, collaborative psychotherapy for individuals and couples, anthroposophic painting workshops and retreats

Robin Lieberman 503.222.1192  
MSW, Licensed Clinical Social Worker

Waldorf Travel Service

Walter Rice, CTC  
Travel Magician

5316 SE Sherman St.  
Portland, OR 97215  
800-328-7266  
503-233-4053  
fax: 503-232-7224

Incredible Journeys Since 1975 walter@waldorftravel.com

**Pohala**  
A Place of Healing

Primary Care Infused with the Aloha Spirit integrating Anthroposophic Medicine.

Julie E. Foster, MSN, FNP

7477 SE 52nd Ave.  
Portland, OR 97206

contact@pohalaclinic.com (503) 572-4196

Place Your Ad Here!

And Support the Portland Branch

Contact Valerie Hope at [Valerieannhpdx@aol.com](mailto:Valerieannhpdx@aol.com)

**Dr. Lisa Del Alba**  
Anthroposophical N.D.

**Pohala Clinic**  
503-572-4196  
7477 SE 52nd Ave. Portland, OR 97206

under the roof  
HEALTH CARE  
uorhealth.com

**Benjamin Bell LMT** OR Lic 3382  
Advanced CranioSacral Therapy

**Eugene Scheduling**  
541-799-6097  
1695 Jefferson St. Eugene, OR 97402

In lecture one of the "Study of Man" Rudolf Steiner explains "The task of education conceived in the spiritual sense is to bring the Soul-Spirit into harmony with the Life-Body... The child only begins to breath in the right sense of the word when he has left the mother-body.... As we breath in, we are continually pressing cerebrospinal fluid into the brain: and, as we breath out, we press it back again into the body.... We may say that breathing is the most important mediator between the outer physical world and the human being who is entering it."

In my 30 years experience of practicing Advanced CranioSacral Therapy (CST), I have found that most of us need help in resolving imbalances that originate from birth, our entry into the breathing experience. CST is one of the few modalities that I am aware of that has the potential to normalize our breathing by assisting self correction (Perhaps playing a part in a proper "education", assisting the harmonizing of the Soul-Spirit and the Life-Body). ~ Benjamin Bell

**If you have a friend or family member interested in CST, bring them along to your first session for a free session.**  
(Please be sure to reserve two consecutive appointment time slots, one for each of you.)

# Portland Eurythmy and the Portland Branch Bringing together two significant events – So you won't have to choose between them!

Each group has two events. Only the Saturday evening events have been brought together.

## Portland Eurythmy: Saturday April 6 at Cedarwood School

- 3:00 performance of *Rainbow Crow*
- 7pm program, *Fire*, preceding the second presentation of *Kaspar Hauser*

## Portland Branch, *Kaspar Hauser and the Struggle for the True Identity of Mankind*, with Eckart Böhmer

- Friday April 5, 7:30 pm at Bothmer Hall
- Saturday April 6, 8pm after the Eurythmy performance at Cedarwood School.



Portland Eurythmy Presents

## *Fire*

*Performance of movement, poetry and music*

*April 6, 2019 @ 7:00 pm  
Cedarwood Waldorf School  
3030 SW 2<sup>nd</sup> Ave., Portland  
Students \$10  
Adults \$15*

*Featuring the works of  
Alexander Scriabin  
Rachmaninoff  
D.H. Lawrence  
Elsa Gidlow*

*For more information:  
503-626-7606  
portlandeurythmy.org*



The Portland Branch of the Anthroposophical Society Presents

## *Kaspar Hauser and the Struggle for the True Identity of Mankind*

Two presentations with Eckart Böhmer

In speaking of Kaspar Hauser Rudolf Steiner said, *If Kaspar Hauser had not lived and died as he did, the bond connecting the spiritual world to the earth would be completely torn asunder.* This statement is all the more startling because Kaspar Hauser is so little known, even among Anthroposophists. See the April newsletter for more about him.

**Friday April 5, 7:30 PM**, Bothmer Hall, 5915 SE Division  
*The Unfulfilled Mission of the Hereditary Prince*

**Saturday April 6, 8 pm (after *Fire* eurythmy)**  
*The Fulfilled Mission of Kaspar Hauser* Cedarwood School, 3030 SW 2<sup>nd</sup> Ave.

**Admission \$15 each presentation**  
contact [valerieannhpdx@aol.com](mailto:valerieannhpdx@aol.com)

Eckart Böhmer founded and directs the Kaspar Hauser Festival in Ansbach, Germany



PORTLAND EURYTHMY

*PRESENTS*

# RAINBOW CROW

A LENAPE NATIVE AMERICAN TALE  
FOR CHILDREN OF ALL AGES

SATURDAY, APRIL 6

3:00-3:30PM

CEDARWOOD WALDORF SCHOOL

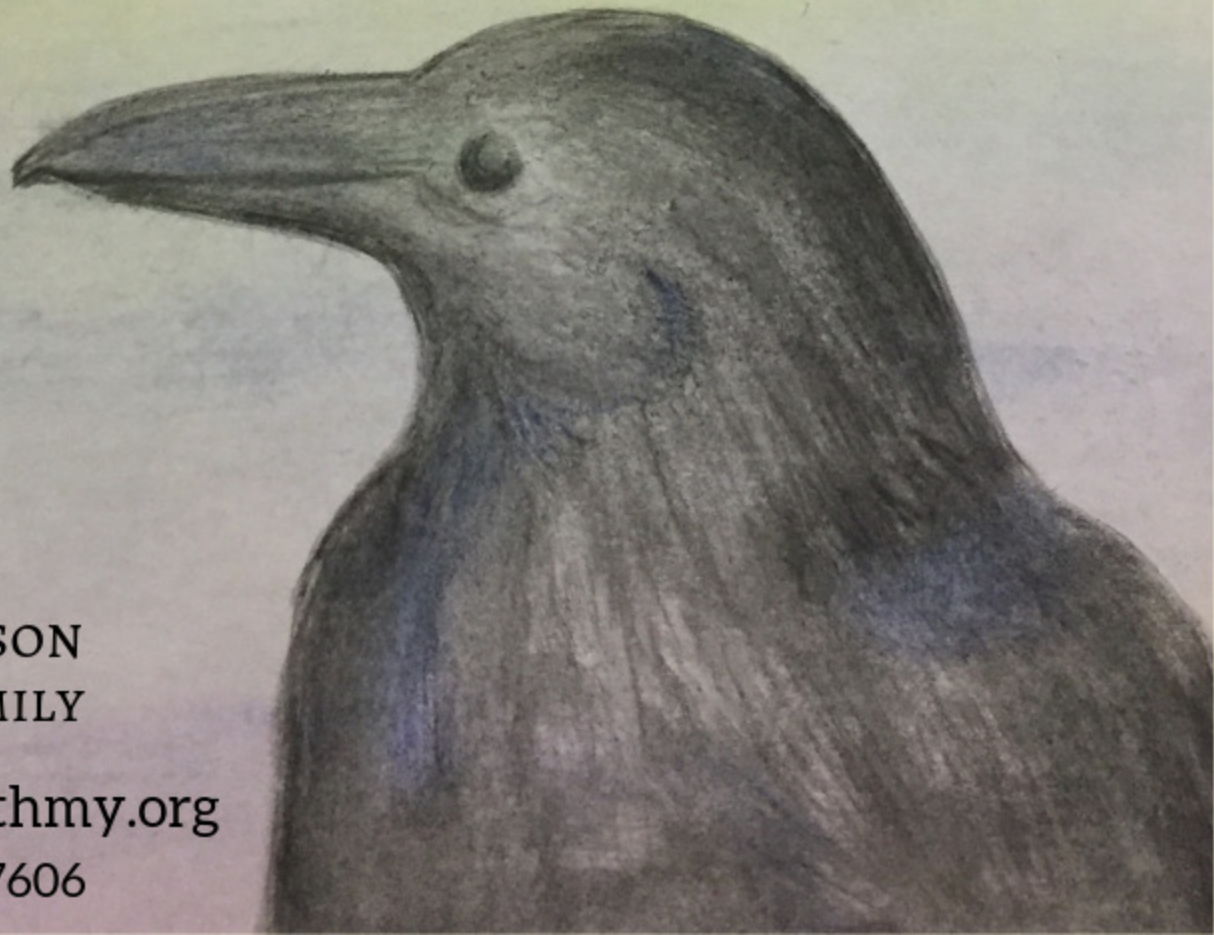
3030 SW 2ND AVE., PORTLAND

\$5 / PERSON

\$10 / FAMILY

[portlandeurhythmy.org](http://portlandeurhythmy.org)

(503)626-7606



# *Balancing Our Three Human Intelligences: The Wisdom of Waldorf Education*

A public evening presentation **Wednesday, April 10<sup>th</sup>, 7:00 PM**  
and follow up morning discussion **Thursday, April 11<sup>th</sup>, 9:30 AM**  
with

**Douglas Gerwin, Ph.D.**



Executive Director of the **Research Institute  
for Waldorf Education;**

Executive Director of the **Center for  
Anthroposophy in Wilton, NH;**

founder of **CfA Waldorf High School  
Teacher Education;**

teacher of history, literature, music, German  
& life sciences at College and Waldorf high  
school levels for 40 years;

a Waldorf graduate.

**PLACE:** Art Building, Eugene Waldorf School campus  
1350 McLean Blvd, Eugene, OR, 97405

**COST:** All are welcome. \$12 suggested donation at the door

*Sponsored by*

**Waldorf Teacher Education, Eugene** [wtee.org](http://wtee.org)

*and*

**the Rudolf Steiner Group of Eugene** [anthroposophyeugene.org](http://anthroposophyeugene.org)

Questions and more info: [marcia@wtee.org](mailto:marcia@wtee.org)

*More than ever, the world needs self-aware people with a strong sense of purpose, concern for others and the capacity to be in service to humanity. WTEE invites students from all nations, all ethnic and racial backgrounds, all spiritual paths and all personal orientations, who wish to study anthroposophy and/or to prepare to become a Waldorf teacher, to join us in our work and study.*





**You are Cordially  
Invited to  
The Annual Gathering  
of  
The Portland Branch of  
the Anthroposophical  
Society**

**Sunday, April 28, 2019  
12-3:30 pm**

**Bothmer Hall, 5919 SE División St.**

**For More Information Contact  
Valerie Hope 503-775-0778  
[valerieannhpdx@aol.com](mailto:valerieannhpdx@aol.com)**

**This is the big social gathering of the year for the Portland Branch! It has become a festive gathering, when we come together to catch up with one another, to assess and celebrate the past and coming years, to eat great food (it's wonderful to be in a community of good cooks and bakers), and enjoy an artistic activity. We will be graced this year with a musical performance by Soprano Angelica Hesse and Pianist Liz Kohl. We will also look at some thoughts about 'the new group souls' and how they relate to our working together.**

**We are looking forward to a rich and enlivening time together, as follows:**

**12:00-1 pm Potluck, social time. Beverages and setups will be provided by the Branch.**

**1:00-1:20 pm Soprano Angelica Hesse and pianist Liz Kohl**

**1:20 Considering our relationship to one another and the new group souls, who want to work with us while leaving us in freedom, unlike the former group souls. From 'Relating to Rudolf Steiner' by Sergei Prokofieff.**

**Followed by brief reports from the council, members' evaluation of the council and the year.**

**We look forward to seeing you there!**

**Warmly, the Portland Branch Council: Valerie Hope, Ruth Klein,  
Tom Klein, Walter Rice, Jerry Soloway**

# The Nature of Water

What makes it good?



**July 21 to 26, 2019**

Opening: July 21 at 7:30 pm

Closing: July 26 at 5:00 pm

at Sunrise Waldorf School in Duncan  
on Vancouver Island, British Columbia, Canada

Our intention is to discover a definition of good water that is not based on negatives and the absence of pollutants but, rather, is based upon the nature of water itself. This can be observed through water behaviour and the conditions it needs in order to serve life.

Water needs to be known in order to be understood. We can only know water when it reveals its story through its behaviour, and its behaviour is extraordinary! Through knowing the conditions water needs to serve life on earth, we can bring health to the environment and all that lives within it.

Jennifer Greene founded the Water Research Institute of Blue Hill in Maine, and has studied water for over 50 years, making it her life's work. Please join us as Jennifer shares her fascinating work with fluid forms such as waves, vortices, turbulence and more.

with  
**Jennifer Greene  
& others**

**One week  
intensive course,  
open to all.**

For more information  
please contact  
Herb Walsh, email:  
walshherb@gmail.com  
phone: 604-721-6828

Visit our website  
to register