



Autumn Imagination, David Newbatt,
<http://www.wynstonespress.com>

needed to grasp the impression. It takes place far more subconsciously in the soul, and this subconscious process taking place of itself, often contradicts in a noteworthy way what takes place in us consciously. Often we may feel an antipathy towards an impression made upon us. The subconsciousness does not feel this antipathy; it generally feels quite differently from the ordinary consciousness. The subconsciousness develops a remarkable feeling towards all impressions. Although an expression taken from the physical world and applied to the spiritual can only be figurative, here it is quite suitable to say that the subconsciousness develops a certain feeling of gratitude towards every impression — irrespective of its nature. It is not inaccurate to say that while we might see someone concerning whom our conscious impression may be very unpleasant — he might insult us to our very face — the subconscious impression would still be a certain feeling of gratitude. The simple reason for this feeling is that everything in life which approaches the deeper element of our being enriches our life, really enriches it, including all unpleasant experiences. This has no connection with the manner in which we must consciously conduct ourselves towards our outer impressions. The way in which we must consciously respond to anything, has nothing to do with what takes place subconsciously; in the subconsciousness everything leads to a certain feeling of thankfulness; there we receive every impression as a gift for which we must be grateful.

Feelings of Unity and Sentiments of Gratitude: A Bridge to the Dead

Excerpts from: *Earthly Death and Cosmic Life*,
Berlin, March 19, 1918

Ed. Note: The indications about Gratitude that Dr. Steiner offers us below provide inspiration for November, the month when we especially focus on cultivating our inner gesture of gratitude in the U.S. The whole lecture, which provides important context, is at <http://wn.rsarchive.org/Lectures/GA181/English/APC1927/19180319p01.html>

...When in life we perceive something — and from early morning, from waking to falling asleep we are always perceiving something of the world, — we are more or less conscious of sympathy or antipathy with what we perceive; and, as a rule, we are quite satisfied when we have grasped a matter. The activity which leads to memory, however, is far more extensive than that

The Portland Branch of the Anthroposophical Society
Invites you to

Save The Date!

See the Calendar & fliers for more info.

November 2	All Souls Observance
Nov. 30-Dec.21	Four Sundays of Advent
December 4	Rainbow Phenomena and Color in Nature, Presentation
December 6	The Christmas Imagination
Dec 26-Jan 6	Holy Nights Readings
April 24-26	Evil as a Challenge: A Manichaeian Journey to the Heart of our Time

It is specially important to keep in mind this fact which is taking place below the threshold of consciousness. What works there and breaks into a feeling of thankfulness, works in a similar way within us as does the impression of the outer world which is to be remembered; it goes side by side with the concept, and only the man who has a distinct feeling that he dreams from waking to falling asleep, can be aware of these things. I have shown in the public lecture on *The Historical Life of Man and its Problems*, that as regards our feeling and will we continue to sleep and dream even in waking life. If we allow the world to work upon us in this way, our impressions and concepts take place incessantly, but beneath this we dream about everything and this dream-life is far richer than we think. It is only eclipsed by our conscious concepts as is a weak light by a stronger. We can, as it were, by experiment, acquire an explanation of such relations by paying attention to various intimacies of life. Let us try to make the following experiment in ourselves. Suppose we are lying on a sofa and wake up. Of course a man does not then observe himself, because immediately afterwards the world makes various impressions upon him; but it may happen that he lies quiet for a time after waking. Then he may observe what he perceived before he awoke, and this he can specially notice if someone has knocked at the door and not repeated the knock; he can recall this, and when he wakes he knows that something has happened; this is clear from the whole situation.

When a man observes something in this way, he is not far from the recognition of what spiritual science has to verify — that we perceive unconsciously a far wider range of our environment than is possible consciously. It is quite true that if, on going into a street, we meet someone just coming round the corner — whom therefore we could not have seen before he appeared — we may feel that we had seen him before he appeared; it frequently happens that we have a feeling that we had seen something happening before it actually does happen. It is true that first we have a psychic spiritual connection with what we perceive later. It is actually so; only we are 'deafened' by the later sense-perceptions and do not observe what takes place in the intimacies of the soul-life.

This again is something which takes place of itself subconsciously, like the formation of memory or the feeling of thankfulness in regard to all surrounding phenomena. The dead can only speak to us through the element which passes through the dreams interwoven with our life. The dead speak into these intimate subconscious perceptions which take place of themselves. If we are in a position to do so, we can share with them the same spiritual psychic air; for if they wish to speak to us, it is necessary that we take into our consciousness something of the feeling of gratitude for all that reveals itself to us. If there is none of this feeling

within us, if we are not able to thank the world for enabling us to live, for enriching our life continually with new impressions, if we cannot deepen our soul by often realizing that our life is absolutely a gift, the dead do not find a common air with us; for they can only speak with us through this feeling of gratitude; otherwise there is a wall between us and them.

We shall see how many obstacles there are in regard to intercourse with the dead, for, as we have seen from other connections, it is dependent on our being karmically united with them. We cannot arouse in ourselves this feeling of gratitude if having lost them, we wish them back in life; we should be thankful we did have them with us quite irrespective of the fact that we have them no longer. Thus if we have not this feeling of gratitude with regard to the beings whom we wish to approach, they do not find us; or, at any rate, they cannot speak to us. The very feelings we so frequently have towards our nearest dead are a hindrance to their speaking to us. Other dead, who are not karmically united to us, usually have more difficulty in speaking to us; but with those nearest to us, we have too little of the feeling of thankfulness that they have been something to us in life. We should not hold fast to the idea that we have them no more, for that is an ungrateful feeling, considered in the wider sense of life. If we clearly understand that the feeling of having lost them weighs them down, we shall keep in mind the whole bearing of this. If we have lost someone we love, we must be able to raise ourselves to a feeling of thankfulness that we have had him; we must be able to think selflessly of what he was to us until his death, and not upon what we feel, now we have him no more. The better we can feel what he was to us during his life, the sooner will it be possible for him to speak to us, to speak to us by means of the common air of gratitude.

In order to enter more and more consciously into the world out of which this comes, many other things are necessary. Suppose we have lost a child. The necessary feeling of gratitude can be brought about by picturing to ourselves how we sat with him and played with him in such a way that the game was as interesting as the child himself. When we can do this, we have the appropriate feeling of companionship — as there is only sense in playing with a child if one is as wholly a playfellow as the child himself. That gives the necessary atmosphere for the feeling of companionship. Thus, if we picture ourselves playing with the child in a truly living way, the place is created upon which our gaze and his can fall. If I am able to grasp what the dead says, I am in conscious union with him. This can be brought about by many things....

... Anyone who succeeds in drawing into his consciousness that feeling of gratitude which would in an ordinary way remain unconscious will at once observe that, unlike the ordinary consciousness it works in such a way that one is able to unite it with the whole

man — at least as far as the arms and hands. Here I must remind you of what I have already said about this side of the human perception; how ordinary ideas are grasped by the brain, but intimate ideas pass through it as through a sieve, into the hands and arms which are really the organs for their reception. This can really be felt. A man need not, of course, outwardly express all this, but he can have the conviction that certain experiences of life such as wonder and awe, can only be expressed through the arms and hands. Fragmentary expressions of this experience — e.g., that the unconscious impulse to take part in these expressions quivers in the hands and arms — are revealed when a man clasps his hands over the beauty of nature or many other things that enter into his consciousness. Everything that subconsciously happens to us comes partially to expression in life. As regards what may be called ‘the desire of the hands and arms to take their part in external expression,’ a man can keep still; it is only necessary to move his etheric hands and arms. The more we are conscious of this, the more we are able to feel outer impressions sympathetically with our arm-organism, the more we develop a feeling which can be expressed in this way: ‘When I see the colour red I am inclined to make certain movements of the hands, for they are appropriate; when I see blue I incline to other movements!’ The more a man is conscious of this, the more he develops the feeling for inspiration for what should develop in the soul, for what he should retain as impressions. When we give ourselves up to playing with children, we lose ourselves in the impression, but we find ourselves. Then comes inspiration, if we have qualified ourselves and prepared the whole man to receive the impression — when even in the case of plunging into our own thoughts, the very fact of this submersion unites us in the feeling in-common with the dead, so that when we awake, we can remain united with the reality of the experience with the whole man, as just described, and this unity is experienced in the feeling of gratitude quivering into the hands and arms. Then the real spiritual existence in which the dead live between death and rebirth, holds intercourse with the living in such a way that we may say: We find our dead when we can meet in a common spiritual place with a common thought which he also perceives, when we can meet in this ‘thought-in-common,’ in a feeling of full companionship. We have the material for this through the medium of the feeling of gratitude; for the dead speak to the living out of the space woven by the ‘feeling-in-common,’ through the air which is created from the feeling of general gratitude common to the world.

Calendar of the Soul

November 2-8; Verse 31: *Light from Spirit Depths*

The light from spirit depths
Strives to ray outwards, sun-imbued,
Transformed to forceful will of life
It shines into the senses’ dullness
To bring to birth the forces that permit
Creative powers, soul-impelled,
To ripen into human deeds.

November 9-15; Verse 32

I feel my own force, bearing fruit
And gaining strength to give me to the world.
My inmost being I feel charged with power
To turn with clearer insight
Towards the weaving of life’s destiny.

November 16-22; Verse 33: *Ahrimanic Deception*

I feel at last the world’s reality
Which lacking the communion of my soul,
Would by itself be frosty, empty life;
Revealing it is powerless
To recreate itself in souls,
Would in itself find only death.

November 23-29; Verse 34

In secret inwardly to feel
How all that I’ve preserved of old
Is quickened by new-risen sense of self:
This shall, awakening, pour forth cosmic forces
Into the outer actions of my life
And, in becoming, mould me into true
existence.⁵

November 30-December 6; Verse 35

Can I know what it is “to be”
So that true life can find itself
Again in soul’s creative urge!
I feel that I am granted power
To make my Self, as humble part,
At home within the cosmic Self.

~Transl. Ruth & Hans Pusch



Here Come the Holy Nights Readings

The time for The Holy Nights Readings is fast approaching, and it is time to put in your request to host an evening. For those who have never attended, the readings are every evening during the twelve nights of Christmas. They begin on December 26th and continue until January 6th. Each evening we read a lecture series from 7:30 to about 9:00 and then have some time to socialize and partake of the refreshments provided by our hosts and others. This type of event happens in many anthroposophic communities and has been celebrated here for more than twenty-five years. Last year there were about 14 people each evening and 30 people attended at least one reading.

It is a unique experience to attend an event like this over twelve nights at this time of the year. There are often special events on some of the evenings, including dropping lead on New Years' Eve. This is an old ritual where people drop molten lead into water and try to see the coming year in the resulting structures.

This year we will be reading *The Apocalypse of St John* lecture series which we last read in 2007. This has been a crowd favorite.

Please call me at (503-777-3176) and reserve an evening to host. I will give priority to people who hosted last year if you reserve by November 21st. After the 21st I will give out dates on a first come first serve basis. I look forward to seeing you all during the holy night's readings.

~ Tom Klein



St. John on Patmos by Hieronymus Bosch
Circa 1489

The 2014 Natural Science/ Mathematics/ Astronomy Section Conference, "A Path Towards Understanding the Imponderable in Nature: Enlivening our Understanding Through Color,"

will take place this year in Portland, Oregon. (see calendar listing) Attached to this newsletter you will find the 2014 conference registration form. The conference is open to members of the School for Spiritual Science who are working out of science or math or astronomy. For this particular meeting, artists who have participated in the color studies at Jannebeth Roell's studio over the past couple of years, who are also members of the School for Spiritual Science, are also welcome to participate. Please register early or indicate your interest through the website contact page. Space is limited to 15 in Jannebeth's studio.

We will continue our theme of inner capacity building toward a qualitative science, through the practice of what Rudolf Steiner referred to as "feeling--understanding" in our experiencing of color. We have been studying the collection of lectures by Rudolf Steiner, *Colour*, Rudolf Steiner Press, 1992, reprinted 2008, 217pp, ISBN 978 1 85584 085 0. Jannebeth Röell will lead us in this study. We will continue to hone our phenomenological methods of research and to develop new organs of perception. Some of you will remember the work we did in 2006 and 2007 with Jannebeth on Dick van Romunde's seminal work, *About Formative Forces in the Plant World*. That first year we worked intensively with the leaf, and the following year with the flower. These were deeply rewarding and valuable conferences. We are pleased to be with Jannebeth again, working now on the inner nature of color. We are also very pleased that Johannes Kühl will be joining us again this year and will bring his research on color in nature. Please contact James Lee by email at anthroposophynow@comcast.net if you have any questions.

Housing Wanted for Science Section Attendees

A few of those attending the Natural Science Section Conference are looking for lodging in private homes with local community members December 4-7. They will pay \$35/night for a room with a bathroom. If you have room available contact James Lee at anthroposophynow@Comcast.net



Colors of the Heavens: Rainbows, Halos, Dawn and Dusk

On December 4 (see Calendar) Johannes Kühl will offer a presentation exploring the captivating colors appearing in the atmosphere of the earth: coronas, glories, halos, rainbows, dawn and dusk. Extraordinary photographs will invite the viewer to observe these ephemeral appearances with renewed attention and understanding.

With an intimate introduction to Goethe's scientific work, and using the holistic phenomenological method developed by Goethe in his *Theory of Colors*, this presentation will offer the audience a new way of relating to atmospheric colors. In an attempt to bridge the wide span between the *physics* of atmospheric colors and a *spiritual* approach to them, the path of unfolding descriptions and thoughts becomes *artistic* in itself.

This presentation will be of interest to those who love atmospheric color phenomena and wish to deepen their relation to them. Several people in the Portland area, gathered around Jannebeth Röell have already been studying Rudolf Steiner's approach to color phenomena artistically.

This review of atmospheric colors could also be helpful to teachers and to scientists looking for a different approach to optics or an introduction to Goethe's phenomenological science.



Mr. Kühl's presentation will be based on his book, originally published in German in 2011, *Höfe, Regenbögen, Dämmerung: Die atmosphärischen Farben und Goethes Farbenlehre* (Verlag Freies Geistesleben). His book is now being translated into English by Adonis Press, and fundraising efforts

are underway to help with the costs of publishing.

"The insight that the love of science and the love of the earth need not be separated from concrete experienced spirituality – this I owe to Anthroposophy."

~Johannes Kühl

Johannes Kühl, physicist and leader of the Science Section at the Goetheanum, was born in 1953 in Hamburg, Germany. He studied physics in Hamburg and Göttingen, finishing with a thesis on fluid dynamics at the Max Plank Institute. After a year of research at

the Science Section at the Goetheanum, he taught physics, chemistry and mathematics at the Waldorf School Stuttgart Uhlandshöhe. Since 1996, he has been the leader of the Science Section at the Goetheanum and a member of the Collegium for the School for Spiritual Science.

Since high school, core areas of interest for him have been modern physics and optics, as well as Goethean Science. He has given numerous lectures and seminars on these themes.

The Research Institute at the Goetheanum

The Natural Science Section is one of eleven sections of the School for Spiritual Science at the Goetheanum. Prior to his visit to Portland, Mr. Kühl will meet with the Collegium of representatives from each of the Sections in North America in Spring Valley, NY.

The Research Institute at the Goetheanum is operated jointly by the Natural Science Section and the Section for Agriculture. Fields of research include biology, agricultural sciences, nowadays especially bees, medicinal plants, chemistry, physics, and image-forming methods. Co-workers draw from a spectrum of phenomenological methods originating in Goethe's scientific work and developed further through Rudolf Steiner's anthroposophy as spiritual science. They understand research not only as "analysis." Good research always changes one's image of the world and creates new perspectives and possibilities for orientation in contemporary issues such as genetic engineering and climate change; it makes it possible for new questions to arise and allows us to take responsibility for our future.

The objectives of the Institute include supporting the evolution of Goethean science in relation to modern science, society, and anthroposophy, while facilitating collaboration among scientists, research groups, and institutions worldwide. science.goetheanum.org/

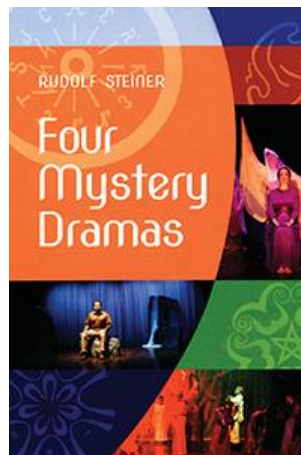
The Science Section in North America

Mr. Kühl is visiting Portland in conjunction with the annual members meeting of the Natural Science/Mathematics-Astronomy Section of the School for Spiritual Science in North America. This annual meeting is open to any member of any Section of the School for Spiritual Science. For registration information, see our website. naturalsciencesection.org/

This will be the fourth time that the Science Section will meet in Portland over the years. We have asked Jannebeth Röell to lead us once again in developing the practice of qualitative, phenomenological science. This year in particular, we will explore what Rudolf Steiner referred to as "feeling understanding" in the collection of twelve lectures entitled *Colour* (Rudolf Steiner Press).

Gratitude for the New Chairs at Bothmer Hall!

The torturous blue chairs at Bothmer Hall have been replaced with sturdy padded folding chairs through a generous contribution from the Portland Branch, augmented by a donation from the Drs. Takacs, for a total of 60 new chairs. If you have in the past stressed about arriving at events early in order to garner one of about four comfortable chairs, stress no more! Last year the Branch contributed lightweight tables to the hall, which have made set-up for events immeasurably easier. We would like to extend our gratitude to Dr. John Takacs and Dr. Joan Takacs, whose generosity has provided this wonderful meeting place for the Anthroposophical community, and to Becky Hatch, who graciously manages all scheduling and arrangements.



Gratitude is not only the greatest virtue, it is the parent of all the other virtues.
~Cicero

There is a Knighthood of the 21st century,
Whose riders do not ride through the darkness of physical forces, as of old,
But through the forests of darkened minds.

They are armed with a spiritual armor
And an inner sun makes them radiant.
Out of them shines healing, healing that flows from the knowledge
Of the image of Man as a spiritual being.

They must create inner order, inner justice,
Peace and connection in the darkness of our time.
They must learn to work side by side with angels.

~Dr. Karl König

The Spring Valley festival in August 2014 featured the first ever performances of all four mystery dramas in English by a single cast. To continue and deepen the work of this festival, Barbara Renold will offer an online course, consisting of twelve sessions, on the first mystery drama, *The Portal of Initiation*. This course is sponsored by the Anthroposophical Society in America. It is the intent of Barbara and the Society to offer each year, sequentially, the opportunity to study the dramas in depth. We will work with the newly published text of the four mystery dramas (SteinerBooks 2014).

The sessions will take place on Tuesday evenings, from 9:00 to 10:00 p.m. ET:

- **October 7:** Introduction to the Mystery Dramas and overview of *The Portal of Initiation* – recording available
- **November 4 & 18:** Prologue and Scene 1
- **December 2 & 9:** Scenes 2 and 3
- **January 13 & 20, 2015:** Scenes 4, 5 and 6
- **February 3 & 17:** Scene 7, Interlude, Scene 8
- **March 3 & 17:** Scenes 9, 10 and 11
- **March 31:** Overflow, review and preview

This course is open to all. **Tuition is \$150.** Sessions will be recorded for playback at your convenience. Follow this link to register:

<https://secure.anthroposophy.org/np/clients/anthroposophy/event.jsp?event=15>

Scholarship help is available if needed. Please contact Marian Leon at marian@anthroposophy.org with this or other questions. The presenter for this course, Barbara Renold, directed the August 2014 Spring Valley performances and has been producing the mystery dramas in community theater since 1986. She is a practicing speech artist.



Marie-Laure Valandro was born in 1948 and spent her childhood in Bourgogne, Morocco, Algeria, and Bretagne. At fifteen, she moved with her family to Boston, where she received a B.A. in modern literature, romance languages, and education and taught in the

Boston public school system. Later, she moved to Vermont, and obtained an M.A. in literature. At twenty-three, Marie-Laure returned to Paris to study at The Sorbonne, to teach and to travel around Europe to various Christian Holy sites. She later moved to Tehran to teach technical English and to tour throughout the Eastern world, studying Sufism, Zoroastrianism, Islam, Buddhism, and Hinduism as seen through the eyes of its believers and through visits to holy sites. Marie-Laure returned to the United States to care for her son. She lived in the community of Wilton, New Hampshire, where she first

encountered Anthroposophy. She ended her school teaching to care for her daughter, son, and husband, a medical doctor. Meanwhile, she continued to travel and trek in South America, both alone and with her children. Later, she moved to Wisconsin and began the Liane Collot d'Herbois training in painting. On her family farm in Wisconsin, Marie-Laure uses biodynamic methods and has developed master gardens, vegetable gardens, herb gardens, and an orchard. She has also established a painting studio, where she creates large veil paintings. She later moved from Wisconsin to a post-and-beam house built by her son in the Canadian Rockies of British Columbia. She now lives in Bellingham, Washington where her studio is located. Her goal is to continue walking across this beautiful Earth, meeting people with love and sharing her journeys in meditative books, sprinkled with insights from Rudolf Steiner's works and the many talented students of his teachings. She continues to make large veil paintings to "heal people and spaces."

(See Calendar & flier for Charcoal Workshop)

MARIE-LAURE VALANDRO

AT THE ART HALL
thearthall.wordpress.com

OPENING RECEPTION
 FIRST THURSDAY
 NOVEMBER 6TH, 2014
 5:30-8:00PM

ARTIST TALK
 "THE ARTS"
 6:00PM



CEDARWOOD WALDORF SCHOOL
 3030 SW SECOND AVENUE
 PORTLAND, OR 97201

EXHIBIT OPEN TO THE PUBLIC BY APPOINTMENT
 THROUGH DECEMBER 3RD. PLEASE CONTACT
 ROBIN LIEBERMAN AT 503-222-1192.



Portland Branch Calendar

November 2014

First Class of the School of Spiritual Science – Lesson Six

Sunday, November 9, 9:30 am sharp (no admittance after the class starts) • Bothmer Hall, 5919 SE Division St, Portland, 97206, Contact Diane Ramage at 971-271-7479 or Cheri Munske at 503- 484-4133 Blue card required. Second Sunday of each month.

Schedule for the year: 11/9 Lesson Six; 12/14 Lesson Seven

Portland Branch Council Meeting

Monday, November 10, 7pm • 2606 SE 58th Ave. • Contact Valerie Hope, 503-775-0778; email valerieannhpx@aol.com.

All Branch members are welcome to attend, and/or to call us with agenda items, proposals, suggestions, or to observe. Meetings are on the second Monday of each month.

All Souls Observance

Sunday, November 2, 4:00 pm • Bothmer Hall, 5919 SE Division St, Portland • Contact Valerie Hope valerieannhpx@aol.com or Lucia Mello, melloalucia@gmail.com

Join us for a remembrance of your dead. You may bring pictures or other items associated with those you would like to remember. They can be placed on the table with candles that will be provided. To deepen our understanding we will read together a lecture by Rudolf Steiner on staying connected with those who have crossed over.

Marie-Laure Valandro Veil Painting Exhibit - Opening Reception and Talk

November 6, 5:30 pm – 8 pm ; Ms. Valandro's talk on *The Arts* at 6 pm • Cedarwood Waldorf School Art Hall, 3030 SW Second Ave. Portland 97201 • Contact Robin Lieberman, 503-222-1192 • Open to the public • no charge

We are honored and excited to be presenting the exquisite veil paintings of Marie Laure Valandro, an Anthroposophic painter in the tradition of Liane Collot-d'Herbois. We invite you to join us for the opening reception and to hear Ms. Valandro's vital talk on *The Arts*. This exhibit will be on display at Cedarwood Waldorf School's Art Hall through December 3.

Marie-Laure Valandro Veil Painting Exhibit

Thursday, November 6 – December 3 • Cedarwood Waldorf School Art Hall, 3030 SW Second Ave. Portland 97201 • Contact Robin Lieberman, 503-222-1192 • Open to the public

We are honored and excited to be presenting the exquisite veil paintings of Marie Laure Valandro, an Anthroposophic painter in the tradition of Liane Collot-d'Herbois. We invite you to join us for the opening reception and to hear Ms. Valandro's vital talk on *The Arts*. This exhibit will be on display at Cedarwood Waldorf School's Art Hall through December 3.

Light & Darkness: an inspiring workshop in charcoal with Marie-laure Valandro

Friday, November 7th, 9:00 am – 12:00 pm • South Performance Space at Cedarwood Waldorf School • \$50 plus materials fee
Contact: Robin Lieberman 503-222-1192 or robin@robinlieberman.net

A rare opportunity to learn from a master veil painter in the tradition of Liane Collot-d'Herbois. In conjunction with the artists's exhibit at The Art Hall at Cedarwood Waldorf School 3030 SW First Avenue, Portland, OR 97201

Goethe, Steiner and other Pioneers of Emergence with Frederick Amrine & Gordon Miller

November 7 & 8 • Seattle • Contact Rudolf Steiner Bookstore to register: 206-985-2059 • \$80 by October 20, \$95 after

Friday topic: Rudolf Steiner as an Expressionist Architect; **Saturday topics:** Scientific Discovery as Intellectual Beauty and Harmony; Resounding Morphology: Elements of Goethean Acoustics; Rudolf Steiner as a Pioneer of Emergence; and Rudolf Steiner, Owen Barfield, and the Emergence of Voice in Nature.

Camphill Village Portland Start-up Meeting with Karen Arthur

Sunday, November 9th, 4:00-5:30 PM • Bothmer Hall, 5919 SE Division St, Portland • Contact Robin Lieberman 503-222-1192, robin@robinlieberman.net or Kelly Hogan at 503-944-9312 • all interested folks are welcomed

A first public organizing meeting to explore local interest in creating an intentional, intergenerational, interdevelopmental, spiritual community.

Medicinal Plants Lecture with Dr. Shawnte Yates ND, LAc

Friday, November 14, 8 am-9:30 am • National College of Natural Medicine, 049 SW Porter St., Rm 322 • open to the public • Contact Sandy Musclow, sandymusclow@gmail.com or 971-271-4241

Dr. Shawnte Yates will discuss medicinal plants in the context of their botanical families to understand their therapeutic actions. The talk will include dialogue of the growth structure of the plant and how it may reveal a deeper understanding of the therapeutic plant action reflected in its form.

Christian Community Events for November with Reverend Sanford Miller

November 20-23 • Bothmer Hall, 5919 SE Division St., Portland (except Thurs. see below) • Suggested donation for talks \$10; contribute what you can, no one will be turned away • Pre-arranged childcare available for Sunday events • Contact Sandra Burch with questions, or for childcare during the Sunday adult service, 503-353-1818, galenalyn@gmail.com

Rudolf Steiner gave new life to education with the Waldorf School, and he helped found the Christian Community – a Movement for Religious Renewal – a Christian path for modern people. Come experience the renewed Mass and the Children's Service.

- **Thursday, November 20, 6 pm potluck, 7:30 pm: How do I Fulfill my Destiny? What is Karma, what is destiny?**
Location, the Burch House, call for directions
- **Friday, November 21, 7:30 pm: Micha-el: Point and Periphery – the tension between being locally active and a citizen of the cosmos. Close of Day Service** directly following the lecture Friday night. All are invited to experience this simple and beautiful way to end your day.
- **Saturday, November 22**
- **9:00 am** The Act of Consecration of Man – Open Communion for Adults.
10:15am Gospel Study – Apocalypse 22: 6 – 19 - The New Jerusalem: Come and study this text, with the insights of Spiritual Science.
- **Sunday, November 23, Sunday Services**
9:15 am Religious instruction for children grades 1-8
10:00 am Children's Service grades 1-8
10:30 am The Act of Consecration of Man - Open Communion for Adults (Potluck directly following the service.)

Spiral of Light for the Community

Sunday, November 30, 7:45 pm – 8:30 pm • Cedarwood Waldorf School Performance Space, 3030 SW 2nd Ave. • Contact 503-245-1477

The Cedarwood Waldorf School offers the Spiral Path to friends, family, and anthroposophical community members. In the darkest time of the year, around winter solstice, our souls become ever more inward, reaching the core from where our spiritual light radiates its life, revealing who we really are.

The Spiral of Light is a festival symbolically portraying this most intimate and sacred journey of the individual soul traversing the mineral, plant, and animal kingdoms, and finally reaching to the center of personal and human destiny. Every year during this festival we, as soul travelers, take up our solo journey in the darkness, carrying a red apple in our hands, walking along the spiral path of evergreens, while the starry tones of a lyre accompany us. When we arrive at the center of the spiral path, calling forth our humanness, a quietly shining destiny candle awaits us. We receive the light of our own destiny, choose a place to direct the light, and offer it up to the world as we traverse the spiral path in reverse. One by one, the path is further illuminated by the destiny light of each successive participant. By the end, a starry world has been created on the earth and shines towards the heavens.

The path will be quietly waiting for you, please come and join this sacred co-creation of the heavenly lights on the earth.

Celebrate Advent with the Portland Branch

Four Sundays of Advent, November 30 & December 7, 14, 21, 7 pm – 8:30 pm • At the home of James Lee & Jannebeth Roell • Call 503-249-3804 or email anthroposophynow@comcast.net to reserve your space.

Light refreshments will be provided afterward by Branch members. The following selections from *Leading Thoughts, The Michael Letters*, will be considered, with copies made available by the Portland Branch Library:

Advent Sunday 1: Michael-Christ Experience in Man: Michael-Christ will stand in future as the guiding word at the entrance to the path upon which man may arrive at his world-goal, in a way that is cosmically right, between the Luciferic and the Ahrimanic powers. http://wn.rsarchive.org/Books/GA026/English/RSP1973/GA026_c07.html

Advent Sunday 2: The World-Thoughts in the Working of Michael and in the Working of Ahriman: One who holds fast to Michael cultivates love in relation to the outer world, and he thereby finds that relation to the inner world of his soul which brings him in touch with Christ. http://wn.rsarchive.org/Books/GA026/English/RSP1973/GA026_c09.html

Advent Sunday 3: *Mystery of the Logos*: To turn the human heart in love to these great cosmic facts: this is the true content of the festival of remembrance which approaches man each year when he contemplates the cosmic Initiation-Night of Christmas.

http://wn.rsarchive.org/Books/GA026/English/RSP1973/GA026_c14.html

Advent Sunday 4: *What is the Earth in Reality within the Macrocosm?* The life of all this earthly realm becomes clear and transparent when we feel at its foundation the germ of a new Universe.

http://wn.rsarchive.org/Books/GA026/English/RSP1973/GA026_c19.html

The Christmas Imagination: Portland Branch Exploration

Saturday, December 6, 7:30 pm • The Hope's House, 2606 SE 58th Ave. • Copies will be provided, all are invited • For more information contact Valerie Hope, 503-775-0778; email valerieannhpdx@aol.com.

As we continue in our striving to penetrate and understand the deep significance of the festivals, we will come together to read and explore *The Christmas Imagination* which was given to us by Rudolf Steiner. This lecture is available at:

<http://wn.rsarchive.org/Lectures/GA229/English/RSP1968/19231006p01.html>

We were pleased to explore together *The Michael Imagination* in September, and perhaps will be able to continue with *The Easter Imagination* and *The St. Johns Imagination* over the course of the year.

“In the thought of Christmas and the thought of Easter, the soul of man wills to look upon the two great mysteries. And, as it thus looks, it finds in this contemplation strength filled with light for man's thought, content filled with power for the will, an upright lift of the whole man, from whatever situation he needs this upright lift. As they thus confront us, these two pillars of the spirit – the thought of Christmas and the thought of Easter – they possess an eternal worth.” ~ Rudolf Steiner

A Path Towards Understanding the Imponderable in Nature: Enlivening our Understanding Through Color

Thursday, December 4 – Sunday, December 7 • at Jannebeth Roell's studio, Portland, Or. • Contact James Lee by email at anthroposophynow@comcast.net

Attached to this newsletter you will find the 2014 conference schedule, registration form, costs, and logistics around the conference. The conference is open to members of the School for Spiritual Science who are working out of science or math or astronomy. For this particular meeting, artists who have participated in the color studies at Jannebeth's studio over the past couple of years, who are also members of the School for Spiritual Science, are also welcome to participate. Please register early or indicate your interest through the website contact page www.naturalsciencesection.org. Space is limited to 15 in Jannebeth's studio. If a larger venue becomes necessary, we would need time to confirm those arrangements. We will continue our theme of inner capacity building toward a qualitative science, through the practice of what Rudolf Steiner referred to as “feeling--understanding” in our experiencing of color. We have been studying the collection of lectures by Rudolf Steiner, *Colour*, Rudolf Steiner Press, 1992, reprinted 2008, 217pp, ISBN 978 1 85584 085 0. **See article in this newsletter.**

Rainbow Phenomena and Color in Nature with Johannes Kühl

Thursday December 4, 7:30 pm • Cedarwood Waldorf School, South Space, 3030 SW 2nd Ave, Portland 97201 • Contact James Lee at anthroposophynow@comcast.net if you require further information

Johannes Kühl will make a presentation on the topic of rainbow phenomena and color in nature. This public event is hosted by the Natural Science Section and the Portland Branch of the Anthroposophical Society in America. The talk will be followed by questions, discussions, and refreshments. The event will be brought to a close by 9:30 PM. Johannes Kühl will be visiting us from the Goetheanum in Dornach, Switzerland where he is a leader of scientific work. Donations will gladly be accepted.

Evil as a Challenge: A Manichaeian Journey to the Heart of Our Time with Christine Gruwez

April 24-26, 2015 • Cedarwood Waldorf School, South Space, 3030 SW 2nd Ave, Portland 97201 • Fee, \$100 • Contact Valerie Hope, 503-775-0778; email valerieannhpdx@aol.com

We are so looking forward to hosting Christine Gruwez, who has worked intensively with Manichaeism which “... attempts to integrate its views of the meaning and significance of good and evil in terms of a human image.” Her life's research question became: How can we actualize what historical Manichaeism has initiated in human history?”

Be sure to mark the dates on your calendar.

Ongoing Local Activities and Study Groups

First Class of the School of Spiritual Science • Second Sunday of the month

9:30 am sharp (no admittance after the class starts) • Bothmer Hall, 5919 SE Division St, Portland, 97206 • Blue card required. Contact Diane Ramage at 971-271-7479 or Cheri Munske at 503 772-2632

First Class of the School of Spiritual Science • Second Sunday of the month

9:30 am sharp (no admittance after the class starts) • Bothmer Hall, 5919 SE Division St, Portland, 97206 • Blue card required. Contact Diane Ramage at 971-271-7479 or Cheri Munske at 503 772-2632

Council Meetings of the Portland Branch • Second Monday of the month

7-9 pm • 2606 SE 58th Ave., Portland • Contact Valerie Hope, (503) 775-0778, valerieannhpdx@aol.com

All Branch members are welcome to attend, and/or to call us with agenda items, proposals, suggestions, or to observe.

Anthroposophical Leading Thoughts Study Group • First Monday of the Month

7:45-9:00 pm • Bothmer Hall, 5919 SE Division St., Portland 97206 • Contact Jerry Soloway 503-908-7615 or jrsoloway@hotmail.com

Please join us in lively discussions centered on Rudolf Steiner's *Leading Thoughts – Anthroposophy as a Path of Knowledge: The Michael Mystery*. These short paragraphs, written in the last year of Rudolf Steiner's life, were meant to guide members in their study and discussion of Anthroposophy.

Mystery Dramas of Rudolf Steiner and Speech-Formation Exercises • Second and Fourth Wednesdays (holidays excluded)

7:30-9:00 pm • Starting anew November 12, 2014. Free. Beginners are welcome –come check us out! • 8654 NE Boehmer St., Portland 97220 • Contact Diane Ramage by e-mail at drumage@comcast.net or by phone at 971-271-7479.

Portland Waldorf School Community Choir • Friday Mornings

8:45-10:15 am • Portland Waldorf School, 2300 SE Harrison St., Milwaukie, in the Orchard Room • Free will donations gladly accepted, all voices are welcome. Contact www.portlandwaldorf.org • pws_choir-subscribe@yahoo.com (503) 654-2200

The Spiritual Hierarchies and the Physical World Study Group • First and third Tuesdays

7:30-9 pm • 3046 NE 33rd Ave. contact Donna Patterson and Bob Kellum, 503-331-7393 • All are welcome

Threefold Social Renewal Study Group • Every Friday

10:00-11:15 am • Portland Waldorf School • contact dr.ali.nd@gmail.com or 503-303-4078

We will start with reading and discussing Johannes Rohen's "Functional Threefoldness in the Human Organism and the Human Society", and will continue to choose readings together under the general topic of the threefold social organism. All are welcome. Hope you are able to join us!

World Economy Study Group • First and Fourth Thursdays

6:30-8:00 pm • 3046 NE 33rd Ave. • contact mgivens.lac@gmail.com or 503-303-4078

Please join us in a diverse study group around the principles and practices of Associative Economics. We will be reading and discussing Rudolf Steiner's 14 lectures on the "World Economy". The recommended text is "Economics: World as One Economy", translated by Dr. Christopher Houghton Budd. It can be found at <https://www.cfae.biz/publications/shop/>

Waldorf Education and Teacher Training Lectures and Courses

Conducted throughout the year by the Michael Institute. Contact John Miles, 503-774-4946 johncmiles@usa.net

Waldorf Teacher Education, Eugene

September-June • Eugene Waldorf School • Contact Lee Ann Ernandes @ message phone, 541-686-9112

Preparing Waldorf teachers for their future vocation since 1990.

The **Portland Anthroposophic Times** is published monthly to serve Branch members and friends. To learn more about the Portland Branch of the Anthroposophical Society, contact Diane Ramage at 971-271-7479.

To submit an article or a calendar item, email it to both Valerie Hope, valerieannhpdx@aol.com and Wes Burch, truelion@comcast.net. The deadline for submissions is the 15th of the month. Items selected for publication may be edited for style, content and length.

To sign up for our email list, or contact the Branch Council, go to <http://www.portlandbranch.org/contact>

Newsletter co-editors are Wes Burch & Valerie Hope, Seth Miller is our webmaster, and Ruth Klein is our treasurer.

The newsletter and calendar are posted on the Branch website, www.portlandanthroposophy.org. Paper copies are available at the Takacs, Pohala and Healthbridge Clinics; and the Cedarwood, Michael & Portland Waldorf Schools, and Swallowtail School.

The Portland Branch thanks the following Members & Friends for their Dues and Generous Donations in 2014: Karen Arthur, Christine Badura, Betty Baldwin, Virginia Berg, Sandra Burch, Wes Burch, Sara Case, Yvonne DeMaat, Mia Ellers, Lauren Johnson, Bob Kellum, Donna Kellum, Ruth Klein, Tom Klein, James Knight, James Lee, Robin Lieberman, Patricia Lynch, Cheri Munske, Robin O'Brien, Padeen Quinn, Diane Ramage, Jeff Rice, Jannebeth Roell, Diane Schell-Rowley, Jerome Soloway, Rebecca Soloway, Barbara Strong, Elizabeth Webber, Neil & Cindy Weinberg **Please submit your Branch membership dues (\$50) each January, or your donations, to: The Portland Branch c/o Ruth Klein, 3609 SE Center, Portland, OR 97202**

Physical Medicine & Injury Rehabilitation



Susan Schmitt, M.D.

Joan Takacs, D.O.

John Takacs, D.O.



The clinic offers alternatively extended medicine including Physical Medicine and Rehabilitation and Comprehensive Family Practice. The physicians utilize holistic principles that include the Anthroposophical world conception and its medical modalities, movement principles from Spacial Dynamics®, Feldenkrais®, Intermuscular Stimulation (IMS), Musculoskeletal Ultrasound and refined hands-on techniques to augment alternative and mainstream medical approaches in diagnosis, treatment and prevention of illness and injury including work related injuries, personal injuries, motor vehicle injuries and sports injuries.

5909 SE Division Street, Portland, OR 97206

www.anthroclinic.com 503-234-1531



curative painting and collaborative psychotherapy for individuals and couples

Robin Lieberman
MSW, LCSW

503.222.1192 robinlieberman.net



Primary Care Infused with the Aloha Spirit integrating Anthroposophic Medicine.

Julie E Foster, MSN, FNP
3848 SE Franklin St.
Portland, OR 97202
503.572.4196
pohalaclinic.com

Pohala
A Place for Healing



Waldorf Travel Service

Walter Rice, CTC
Travel Magician

5316 SE Sherman St.
Portland, OR 97215
800-328-7266
503-233-4053
fax: 503-232-7224

Incredible Journeys Since 1975 walter@waldorftravel.com

Place Your Ad Here!

And Support the Portland Branch

Contact Valerie Hope at valerieannhpx@aol.com

Embryo In Motion: Understanding Ourselves as Embryo

4-DVD Set Now Available With Jaap van der Wal, PhD, MD

This beautiful 4-DVD set was professionally recorded live in Portland, OR, June 3–6, 2010.

To learn more about the 4-DVD set and for instructions on how to order it, go to the “shop” portal on the Portland Branch website at www.PortlandAnthroposophy.org.



Meeting Relatives, Friends and Karma over the Threshold

All Souls Observance

Sunday, November 2, 2014
4pm

Bothmer Hall, 5919 SE División St.

Contacts:

Valerie Hope, valerieannhpx@aol.com

Lucia Mello, melloalucia@gmail.com

Into the fields of Spirit will I send
The faithful love we found on Earth,
Uniting soul with soul.
And thou wilt find my loving thought
When from the Spirit-lands of light
Thou hither turn thy seeking soul
To find what thou dost seek in me.

~ *Rudolf Steiner*

Join us for a remembrance of your dead. You may bring pictures or other items associated with those who you would like to remember, to be placed on the table with candles that will be provided. To deepen our understanding we will read together a lecture by Rudolf Steiner on staying connected with those who have crossed over, before speaking the names.

Sponsored by the Portland Branch of the Anthroposophical Society

LIGHT AND DARKNESS

an inspiring workshop in charcoal with

MARIE-LAURE VALANDRO

featured November artist at The Art Hall
at Cedarwood Waldorf School

A rare opportunity to learn from a master veil painter
in the tradition of Liane Collot-d'Herbois.

FRIDAY, NOVEMBER 7th, 2014

9:00 am – 12:00 pm

\$50 plus materials fee

-limited enrollment-

South Performance Space

Cedarwood Waldorf School

3030 SW Second Avenue

Portland, OR 97201

Contact: Robin Lieberman

503-222-1192

robinlieberman.net



MARIE-LAURE VALANDRO
 AT THE ART HALL
 thearthall.wordpress.com
OPENING RECEPTION
 FIRST THURSDAY
 NOVEMBER 6TH, 2014
 5:30-8:00PM
ARTIST TALK
 "THE ARTS"
 6:00PM

CEEDARWOOD WALDORF SCHOOL
 3030 SW SECOND AVENUE
 PORTLAND, OR 97201

EXHIBIT OPEN TO THE PUBLIC BY APPOINTMENT THROUGH DECEMBER 3RD. PLEASE CONTACT ROBIN LIEBERMAN AT 503-222-1192.

THE ART HALL
 CEDARWOOD WALDORF SCHOOL

CAMP HILL VILLAGE "CASCADIA" START-UP MEETING

Interested in co-creating an intergenerational, interdevelopmental community? Please come to our first community-wide meeting.

"I have been impressed with the urgency of doing. Knowing is not enough; we must apply. Being willing is not enough; we must do."—Leonardo da Vinci

Sunday, November 9th
4:00-5:30 pm
Bothmer Hall
5915 SE Division Street
Portland, Oregon

Questions: Robin Lieberman @ 503-222-1192
Kelly Hogan @ 503-944-9312

Evil as a Challenge

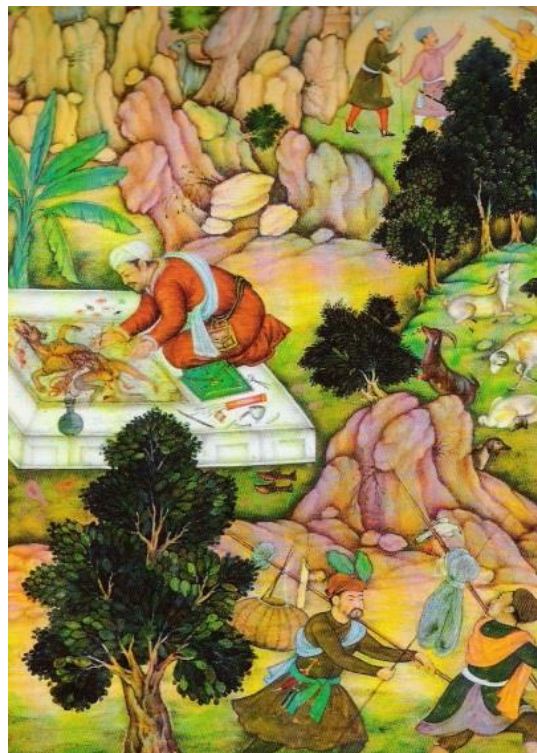
A Manichaean Journey to the Heart of our Time

With Christine Gruwez

April 24, 25, 26

Cedarwood Waldorf School

The world, in an ever accelerating pace is shaken by violence and the urge to revenge and destroy. Hate, fear and overt cynicism take the upper hand while despair and powerlessness increase. What to do? Can something be done? How do we face these outbursts of evil forces? For many of us, the border has been crossed: we can no longer look away. But then, where to look?



At this point, more than ever, it could become important to learn about the Manichaean stream and about what Rudolf Steiner has told about it. The Dutch Anthroposophist Bernard Lievegoed was the first to clearly denote an intrinsic, although not so well known relationship between anthroposophy and the Manichaean impulse, as Rudolf Steiner has called it. And it is his great merit that he gave the stream of Manichaeism its justified place in the context of what is moving in Anthroposophy as an all-encompassing stream in humanity. To Lievegoed, Anthroposophy as a deed does not appear in its full reality until it is viewed in the light of Manichaeism.

The salvation of the soul, the central motif of Manichaeism, is a deed, a deed to which we are called as contemporaries living in turbulent times. But Manichaeism will have to develop further in the future, as Rudolf Steiner expresses it. Knowledge and wisdom may indeed help us, but they can be no substitute for the actual deed. This deed is related to good and evil as they are present in each of us. This deed becomes a presence which concretizes in a particular relationship to the other, whoever he may be. Only through this can we develop an inner organ to listen to the future. A listening with the heart. In the words of Bernard Lievegoed: More and more people will find methods to help others in the most surprising ways. To put yourself in the service of the difficulties of another person, that is the point!

Fee: \$100. Donations to help with Christine's travel from Europe will be gratefully accepted. Work Study available.

Contact: Valerie Hope, 2606 SE 58th Ave., Portland, Ore 97206
503-775-0778 valerieannhpdx@aol.com
Registration form coming in December.



Christine Gruwez in Japan