

# Portland Anthroposophic Times

Newsletter of the Portland Branch of Anthroposophical Society in Portland, Oregon

[www.portlandbranch.com](http://www.portlandbranch.com)

Volume 3.10 October 2007

## Seeds of Anthroposophy

A celebration of the Munich Congress of the Theosophical Society [European Section] held at Whitsun 1907

By John Miles, Happy Valley, OR

### The Gathering

Just over one hundred years ago many spiritually striving souls gathered in central Europe to forge a new pathway for mankind to reconnect with and understand the Spiritual Worlds, those great unseen realms that lie behind the physical semblance of the world. Through this meeting these searchers hoped to clarify the mission of the Earth and its evolution, and several hoped to define the mission of human individuals and human individuality in particular.

The age of spiritual darkness had passed. After 3000 years of the Kali Yuga the veil was ready to be lifted, but humanity was embroiled in the mire of materialism. Although high spiritual beings had given permission for humanity as a whole to access their realms, how this wisdom was to be guided towards mankind was open to debate.

### The Background

In the 1870s Madame Blavatsky began this work with her book *Isis Unveiled*; this beginning was taken up with great enthusiasm by many spiritual seekers in the West, particularly in America. She founded the Theosophical Society with the help of Colonel Henry Steel Olcott and others. She was, however, under the strong influences of her mahatmas or spiritual masters who persuaded her to take the Society to India. The Society became based in India and took on a materialistic nature especially with regard to Alfred Percy Sinnett who wrote two books, *Letters about the Occult World* and *Esoteric Buddhism* under the influence of a certain John King.

### The Story

In a lecture of October 11th, 1915 Rudolf Steiner says: "This book *Esoteric Buddhism* came into my hands very shortly after publication – a few weeks in fact – and I could see from it that efforts were being made, especially from a certain quarter, to give an entirely materialistic form to spiritual teachings. If you were to study *Esoteric Buddhism* with the insight acquired in the course of time, you would be astonished at the materialistic forms in which the facts are there presented. It is materialism in its very worst forms. The spiritual world is presented in an entirely materialistic way. No one who gets hold of this book can shake himself free from materialism."

Despite his misgivings about the Theosophical Society, Rudolf Steiner gave many lectures to Theosophists in Berlin in 1900 and 1901, and in 1902 he became a member. However his intentions were made clear during a conversation at the so-called 'Chrysanthemum Tea' in Vienna in the fall of 1901 when he was asked by Marie von Sivers whether or not it was urgently necessary to call to life a spiritual-scientific movement in Europe. Rudolf Steiner replied: "Certainly it is necessary to call such a Movement to life. But I will ally myself with a movement that is connected exclusively with Western esotericism and cultivates its development." It is unlikely that the leaders of the Theosophical Society were unaware of Rudolf Steiner's impulse and intentions, but he was such an inspiring speaker and had such a genius for spiritual research that they immediately asked him to become the General Secretary of the German Branch of the Theosophical Society.

### The Personality

Rudolf Steiner did not teach in the way that theosophists had become accustomed. He did indeed refer to his masters or mahatmas, but sought guidance not from the Indian Masters, but rather from the Master Jesus and Christian Rosenkreutz. He exposed hidden western traditions throughout history including Plato and Aristotle, Gnosticism and Mithraism, Julian the Apostate, the "schoolmen" of the Middle Ages and Christian Rosenkreutz himself. He also expounded on later figures such as Shakespeare, Goethe especially, and the German philosophers and the part they played in cultural rebirth. In 1904 – 05 political difficulties arose in the Theosophical Society and weakened it putting Rudolf Steiner into an influential position. The original founders of the society were aging. Madame Blavatsky had died in 1891, and Colonel Olcott, their president, was very elderly. Their leading spiritual researcher C.W. Leadbeater was embroiled in sexual scandals. Without assigning blame or making a judgment in that particular case, Rudolf Steiner made it clear that in his view such lapses were inevitable given the 'methods' of research Leadbeater employed. Steiner declared that for Western human beings, one sole method of spiritual development was safe and that was the Christic-Rosicrucian one.

### Preparation for the Congress

In 1906 it was decided by the Theosophical Society to have their next annual congress in Germany where Rudolf Steiner and the German Section would be the hosts. This was brought about in the main by Annie Besant, and she gave Rudolf Steiner her blessing on the understanding he would support her as the next president of the Theosophical Society. Rudolf Steiner was not part of the organizing committee, but the committee unexpectedly asked him to be the President of

the Congress. It was surprising as at the beginning of the year Colonel Olcott died in India and Annie Besant had just been elected President of the Theosophical Society. However, as things turned out Rudolf Steiner was given a free hand to run the Congress in the way he saw fit.

Edouard Schure's 'Sacred Drama at Eleusis' was translated from the French and performed as the center-piece of lectures, music, recitations and other performances. The room was decked out as no other previous Theosophical Congress had ever been. The whole of the walls were draped in red curtains and cut out pillars with planetary motifs were placed down the sides of the hall with large painted apocalyptic seals between.

**If you are interested to learn more about the Portland Branch of the Anthroposophical Society, please call Diane Rumage at (360) 241-7854.**

**The Portland Branch Thanks the following Members and Friends for their Generous Donations in 2007!**

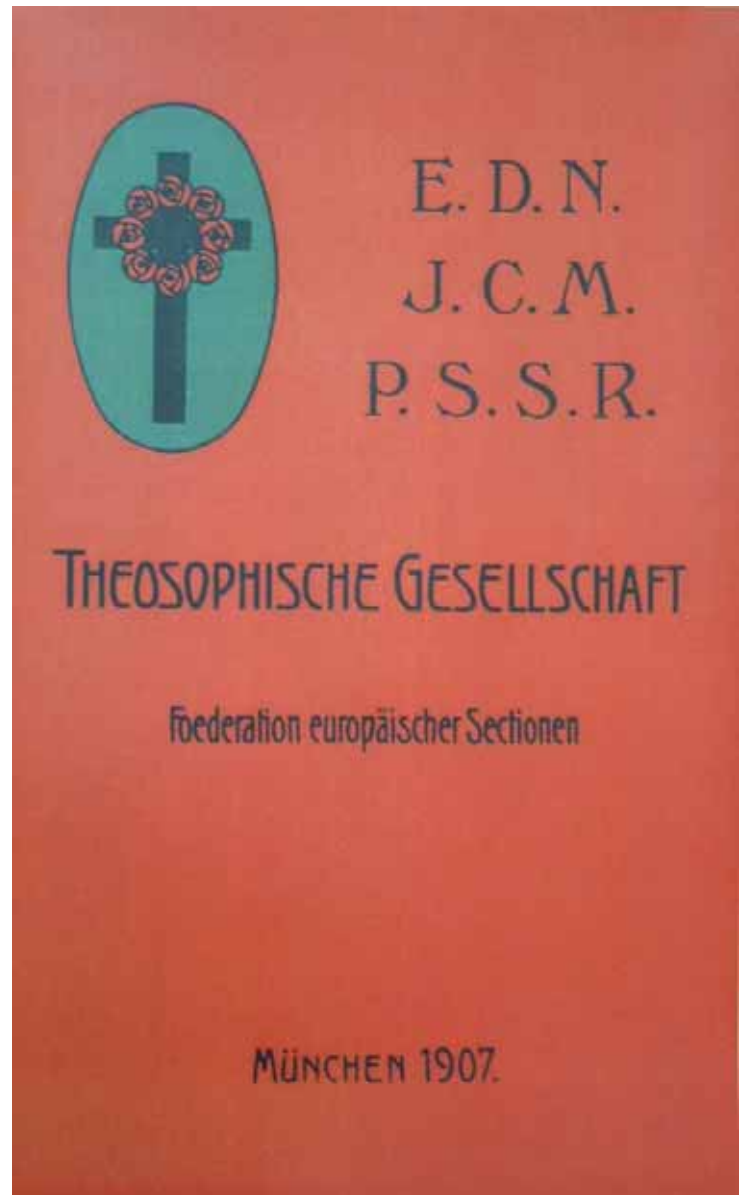
Marion Van Namen	Twila Rothrock	Sacha Etzel
Tom Klein	Ruth Klein	Jannebeth Röell
Nina Churchill	Scott Churchill	Cheri Munske
Rudy Marchesi	Jeffrey Levy	Pam Guettler
Diane Rowley	Winifred Minor	Kendall Weaver
Yvonne de Maat	Lisa Masterson	Ann Marie Bley
Peter Bennett	James Knight	Leslie Cox
Ron Ennis	Betty Baldwin	Samuel Bell-Stalnaker
James Lee	Marsha Johnson	Tish Johnson
Robert Kellum	Donna Patterson	Dan Guedeman
Virginia Berg	Michael Pinchera	Robin O'Brien
Jo Warrick Forkish	Kevin Kane	Barry Lia
Para Winingham	Jeffrey Rice	Tige Grinnell
Diane Rumage	Christopher Guilfoil	Annalysa Lovos
Jan Barnett	Lynn Madsen	Kathleen R Taylor
Amy Thomas	Cedarwood School	Barbara Strong
Margaret Kerndt	Julie Foster	Walter Rice
Tammy Dailey Wagner	Lisa Masterson	John Takacs
Joan Takacs	John Miles	Anne Creadick
Nina Churchill	Nancy Pierce	Celia Kane

The *Portland Anthroposophic Times* is published twelve times a year by the Portland Branch of the Anthroposophical Society in America to serve members and friends in the wider anthroposophical community. Printed copies of the newsletter are available at the Steiner Storehouse, Portland Waldorf School, Cedarwood Waldorf School, Shining Star and Swallowtail School. The newsletter and calendar are also posted on the Portland Branch website at [www.portlandbranch.com](http://www.portlandbranch.com).

Questions, suggestions and submissions may be sent by e-mail to [anthroposophy@earthlink.net](mailto:anthroposophy@earthlink.net). Items selected for publication in the Portland Anthroposophic Times may be edited for style, content and length. The deadline for submissions to the *Portland Anthroposophic Times* is the first day of each month for publication in that month's edition. Submit calendar items to [branchcalendar@mindspring.com](mailto:branchcalendar@mindspring.com) no later than the first of each month for publication in the next edition.

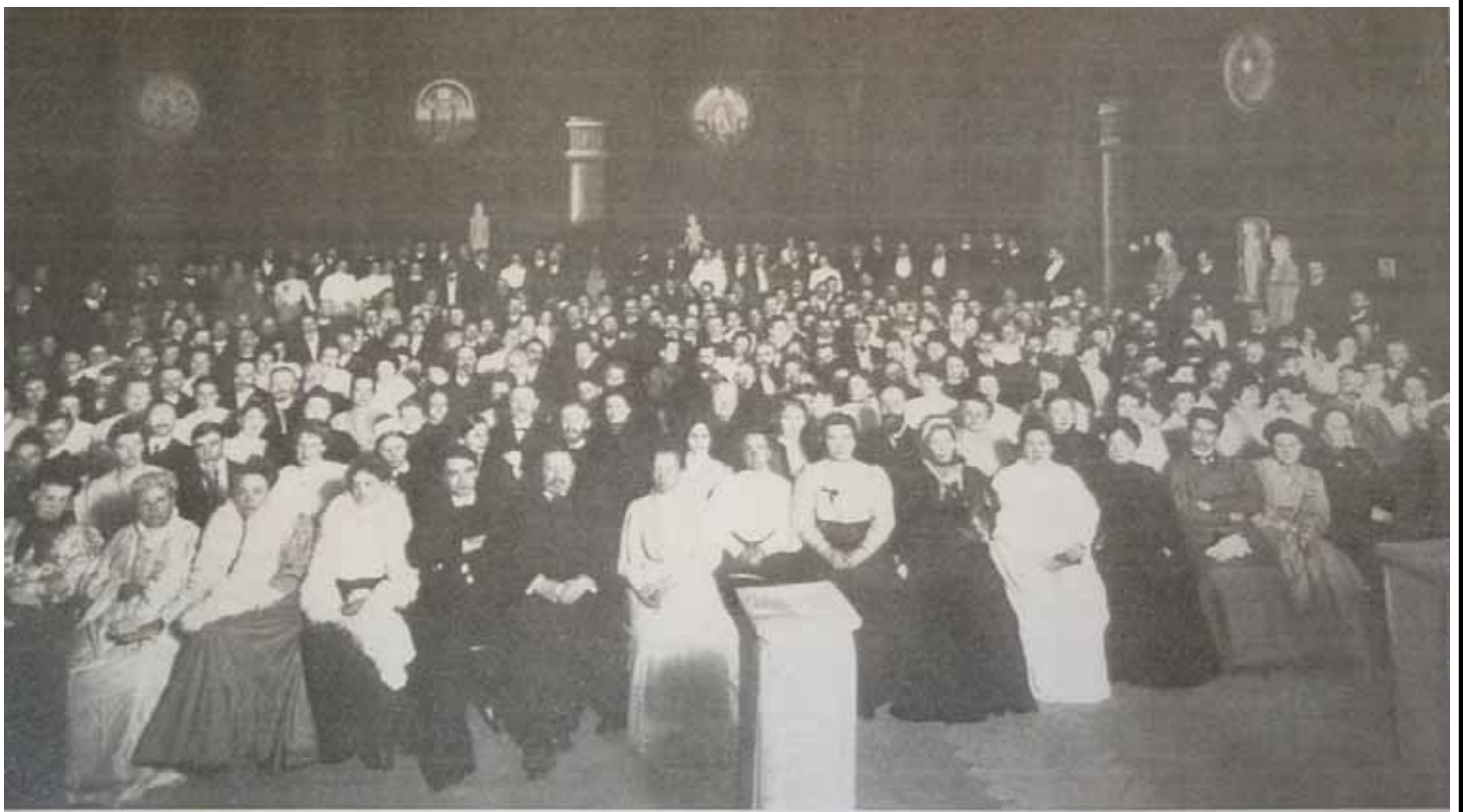
Editor:.....James Lee  
 Calendar: .....Jannebeth Röell and Diane Rumage  
 Editorial Support:.....Jannebeth Röell and Diane Rumage  
 Proofreading:.....Diane Rumage  
 Communications: .....Diane Rumage and Jannebeth Röell  
 Logistics ..... Tish Johnson and Donna Kellum  
 Website: .....James Lee  
 Hardcopy Reproduction:..... Kinko's

The program contained the planetary seals and the front cover highlighted the Rose-cross and the initials of sacred Rosicrucian statements.



### The Congress

The Congress had a huge impact. Many participants from the eastern Theosophical background or from sacred brotherhoods were shocked with many things, not least the central place of the Christos being, Christian Rosenkreutz, western esotericism and the great significance that Art was playing in the Congress. The Western-Rosicrucian Esoteric Section was established with the blessing of Annie Besant and they had shown what they could do, but still there was a backlash. In opposition the "Order of the Star of the East" was later set up and the rift deepened and widened. The split really came a few years later when it was announced by the eastern section that the Christ was reborn in the Indian boy Krishnamurti. This absurd claim was quickly withdrawn but the split was irrevocable and the Anthroposophical Society was born on December 28th, 1912.



The Munich Congress hall with the painted seals and columns (May 21, 1907)

IN THE FIRST ROW, FROM LEFT: 2. Annie Besant 4. Marie von Sivers (Marie Steiner) 5. Rudolf Steiner 7. Sophie Stinde

### The Significance

The significance of this for the development of mankind and the evolution of the Earth will be discussed at the “Seeds of Anthroposophy” Conference being held by the Portland Branch of the Anthroposophical Society from the evening of Thursday, October 25th through Saturday, October 27th at Shining Star School, 4317 NE Emerson, Portland OR 97218. Please call 503 774-4946 if you need a brochure. The conference fee is \$75 if paid by October 17th, and \$90 if paid after October 17th. This Conference has been priced to make it financially accessible to all who wish to attend. Some scholarships are available to those in need and are available by calling 503 774-4946 or you may email: johncmiles@usa.net. The presenters are aware that not all participants will be able to attend all day Friday, and will adjust some presentations accordingly.

### Council Corner

On September 16th the branch annual meeting was held and the Council was elected. Six members of last year’s Council were reelected. (Marsha Johnson, John Miles, Ruth Klein, Betty Baldwin, Walter Rice, and Tom Klein. Cheri Munske had announced her intention not to serve this year. In order to be elected candidates were required to garner 2/3 of the 18 votes cast.

On September 27th the new council met for the first time and organized itself. By a unanimous vote of the five members present a new slate of officers was elected:

Tom Klein — President;  
John Miles — Vice President;  
Ruth Klein — Treasurer;  
Betty Baldwin — Secretary

There is currently one seat open and it will take a Special Meeting of the Branch in order to fill it.

Council Meeting time changed to 7:00pm on the last Wednesday of the month. There will be an exception next month, when it will be held on Oct. 24th in order to avoid meeting on Halloween.

The Portland Branch Council is working on a brochure. We are looking for a logo that identifies the Portland Branch as a part of the Anthroposophical Society, and therefore it needs to be reflective of the style that Rudolf Steiner suggested. It needs to be graphic rather than pictorial and it should have spiritual significance. We are inviting your participation, so start doodling. More details will be given in the next newsletter.

## Biography of Roxanne Sharp Hazen

By Diane Rumage

Jannebeth Roell told me I had to meet Roxanne, and though I knew I would enjoy any travel in Jannebeth's company, I wondered what could be so special about this woman to travel down to Cottage Grove to meet her. I first espied Roxanne as she entered the home of Ilse Kolbuskowski. I sensed a powerhouse of a human being, emanating warmth. We spoke outside, admiring Ilse's white and yellow kiwi blossoms, and I felt an intense light pressing through Roxanne's clear, precise speech. Her speech baffled me, because it seemed to have a slight accent that didn't really suit her apparent ancestry.

We followed her down to her adult foster home, Nathaneal Home, one of two that she operates in Cottage Grove, OR. Nathaneal is Hebrew for "given of God" and she feels that God gave her this home to serve mankind. Before we even entered her house, she told us about the grounds, flowers, garden, house on the hill, and she poured her life story out so quickly that I didn't have time to reach for paper and pen, much less the tape recorder that needed to be plugged in. Once we entered the home, the residents, some in wheelchairs, some ambulatory, poured into the sitting room, smilingly greeting and conversing with us, telling us how much they love Roxanne and her family. It felt like a circling of the light and warmth that obviously poured forth from Roxanne and was shared in that home amongst all who lived and visited there. Anyone who has visited such foster homes, or has relatives in those types of facilities, can sense right away when such a mood is lacking. I wanted right then and there to bring my Dad down to live there, though it would have been too far away for the rest of the family to visit him.

She was born on December 11, 1962 in Stanford Hospital in Palo Alto, CA. She was immediately challenged by having to undergo numerous blood transfusions due to having the Rhesus factor in her blood. Her entire blood was changed twice. She spent her 1st year in near quarantine with her mother to prevent infection, needing great precaution with visitors.

Her oldest sister, Debbie, now an accountant, has always been a strong anchor. Karen, the middle sister, is a Registered Social Nurse. Roxanne is the youngest.

She has played the string bass since she was 9 years old, played later on with the Israeli Kibbutz, and now plays with the Riverside Chamber Symphony and the "Moon Rox Band", which a recent audience loved more than the headliners. She improvises with the "Moon Rox Band", which consists of a drum, sax and her on the bass. When she was younger and the school she had attended was closing down, her music teacher presented her with a plywood bass. Her dream is to acquire a carved bass someday. When I last met with her, she had one



she'd picked up at Marion van Namen's in her car and was hoping to repair it.

In high school, she did a few weeks practical training at the Saratoga Community Garden started by Alan Chadwick. It was a French intensive bio-dynamic garden. She loved it. Her first moon node return was eventful. When 18, she traveled with her boyfriend to Michigan, and returned to California at age 19, realizing the hippy life was not for her. While riding on her bicycle home from the health food store, only 2 blocks away from home, she was hit by a car. Her skull was fractured and she had a hematoma on the left side of her brain. Her sister was praying for her, and said she wished for her 21st birthday present that Roxanne would wake up, and 10 days after the accident, on her sister's 21st birthday, Roxanne woke up.

When she awoke, she was almost as if new born, and was cared for by her sister, learning how to incarnate again while surrounded by her sister's 2 young children, regaining about 1 year every month. Remarkably, she could not speak a word of English, but was able to play music and she could speak French (which she had learned in school). Only after the swelling went down and they closed her skull after 3 months, was she able to read, though with great difficulty. Her speech therapist, Simone, was a Dutch woman, and this accent is perceptible, along with the intense effort at clear, enunciated speech, in Roxanne's speaking to this day.

From 1982-1984 she went to college and worked and studied with therapy. She received speech therapy and studied and gave physical therapy to Multiple Sclerosis patients.

During these years she also worked at the Saratoga Community Garden, where she met and married the head bio-



dynamic gardener who was from Israel. She also attended an anthroposophical study group with Nate and Cecelia Stiles.

She and her husband left for Israel, where they spent 1 year living in a Moshav "Sele-Warburg", an enclosed community where people owned their own home. They lived there in a cottage behind his family's house, and gardened. She also studied Hebrew in the Ulpan. In the 2nd year they moved into Kibbutz-Harduf, an anthroposophical run kibbutz with a Waldorf School, where they shared communal meals. She and an older woman started to bake bio-dynamic bread, which they sold at market and sent to Europe. That effort has since expanded to a factory and 27 employees. Some of the kibbutz folk suggested to her husband that he would benefit from the Social Study work in England.

So they went for 2 years to England. She did therapy her 1st year in England and Werbeck singing with Ursula Koepf. She studied early childhood training with Margret Meyerkort during the 2nd year.

In search of a school at which to teach, they decided to come to the Portland Waldorf School in August 1988, where she studied and worked with Cyndia Ashkar. They lived for 5 years on 5 acres on Sauvie Island, doing organic farming. The first 2 years she worked with Cyndia, the latter 3 years she had an early childhood care group on the farm. She met and established a deep connection with Ilse Kolbuskowski at PWS as she continued curative eurythmy to help in her recovery. She had had many miscarriages, but finally gave birth to Yonah, Daniel and Hannah. The Drs Takacs were influential in helping her to conceive. One evening at dinner the Drs Takacs introduced her to the concept of foster care homes for seniors. Quite a different idea, as her work had been with early childhood. Around this time, as the 5 year farm lease expired, they ended up moving to Noti where she took care of a bio-dynamic farmer's diabetic father for 1 1/2 years.

In 1996, her family moved to Cottage Grove and they inherited some money which helped them to purchase the house they named "Nathaneal Home" in Cottage Grove. They had the good fortune to have friends temporarily lend them



\$10,000 to secure the purchase for a few days until the inheritance arrived. She also acquired her Foster Care license in 1996 on her sister's by now landmark birthday.

She had been having serious questions and struggles concerning her husband and child abuse, and finally around her 2nd moon node in 1999 they were divorced and he was deported.

Her Dad had a heart attack and a stroke and moved in with her for 9 months. She had joined Al-Anon in Cottage Grove, as a child of an alcoholic, and she took her Dad at the same time to AA meetings down the hall. She went to a meeting in March, 2000. It was just after a hysterectomy, and she needed a comfortable big chair. A man named Matt tried to bring in a chair, but it wouldn't fit through the door, so he brought her a pillow. For 1 year they just looked at each other, as Matt went to AA and she went to Al Anon. In May, 2001 they dated, Matt moved in during July, and they were married September 22, 2001. The affection between them both is very touching. He is very "mothering", and helps their children with homework and shuttles them to games. According to her and the residents, he is a great cook and also tends the garden.

Even though adult care is her business, she found it difficult to care for a family member as they need you more than the others do, so her Dad moved in to the house above her on the hill with her mother. He died in 2003. Her mother is still independent and living up on the hill above Nathanael Home.

In 2006 she inherited money from her beloved aunt and purchased and named her 2nd adult foster care home after her--"The Alice Fischer Foster Home" also in Cottage Grove.

As we left, she handed me photos from her youth. I could hardly recognize the same person. Roxanne is truly a being who has reinvented herself, re-incarnated her being!

## A New co-General Secretary

It is with great pleasure that the General Council of the Anthroposophical Society in America announces the selection of

### Torin M. Finser

to work with MariJo Rogers as co-General Secretary of the Anthroposophical Society in America. Torin has been asked to serve the members in the United States by representing them at the meetings of General Secretaries with the Executive Council of the General Anthroposophical Society in Dornach, Switzerland. This will be in addition to his other duties as co-General Secretary with MariJo Rogers.

# Portland Anthroposophical Society Calendar - October 2007

## Ongoing Events and Study Groups

### **Anthroposophical Medicine Study Group**

Once a month Monday 7-8:30 PM at the clinic. Please contact John Takacs at [johntakacsdo@hotmail.com](mailto:johntakacsdo@hotmail.com) or Kevin Kane at [drkev@involved.com](mailto:drkev@involved.com).

### **Biodynamic Agriculture Reading Group**

The biodynamic reading group is reading Steiner's Agriculture Book. Our group meets the 1st and 3rd Sundays at the Parker's, 5720 SE Harney Dr in Portland. We begin with a potluck at 5:30 and start reading at 6. Please contact Sharon Parker at (503) 777-9086 or [sharon.parker@providence.org](mailto:sharon.parker@providence.org).

### **Eurythmy**

Training offered by Portland Eurythmy on weekends and evenings. Please contact Natasha Moss at 503 233-0663.

### **Karmic Relationships**

Working through Rudolf Steiner's Karmic Relationships Cycle of lectures. Call James Lee for information 503 249-3804.

### **Mystery Dramas, with Warm-Up Speech-Formation Exercises**

Two Wednesdays a month, 7:30 - 9:00 PM in NE Portland. Currently working with Rudolf Steiner's *Portal of Initiation* and the *Genesis* lectures. No acting experience necessary, just a love of the Word. Call Diane Ramage at 360 241-7854 for information.

### **Monthly African Drumming Circle**

Each first Monday of the month that school is in session, at Cedarwood School, 3030 SW 2nd Avenue, downstairs in the kindergarten room (you'll hear us). No experience necessary. Bring your own percussion instrument and inspire and be inspired by your fellow drummers. Nov 5 2007, Dec 3, Jan 7 2008, Feb 4, Mar 3, Apr 7, May 5, Jun 2. \$5 donation suggested - more info: Marion Van Namen 503-956-4046.

### **Occult Physiology**

A weekly study group meets Tuesdays, 7:30-9:00 PM. A series of eight lectures given in Prague between 20 and 28 March, 1911. We are just finishing our second pass through this book. Please join us. Contact Diane Ramage at 360 241-7854 for information.

### **Portland Youth Discussion Group**

The Portland Youth Discussion Group, a group of people youthful in mind, body and spirit, gathers to discuss questions of how Anthroposophy compares and relates to other ideas in the realms of philosophy, spirituality, religion, economics, social activism, individual and social development, and relationships. We welcome new people who are open to exploring Spiritual Science and conducting their own research to join us. For more information, please contact Leslie Loy at (503) 819-3399 or [leslielal@yahoo.com](mailto:leslielal@yahoo.com).

### **Portland Waldorf School Community Choir**

Every Friday morning from 8:45 - 10:00 am (at the Portland Waldorf School, 2300 SE Harrison Street, Milwaukie) in the music room of the high school building, whenever school is in session. Anyone in- and outside the PWS community who enjoys singing songs through the seasons, across the centuries and around the world is very welcome, including drop ins. This event is free and a community builder. More information: Marion Van Namen (503)956-4046.

### **Spinning and Spiritual Science**

Gathering on the first Saturday of each month, 3 PM to 5PM, to study Art as Spiritual Activity, lectures by R.Steiner 1888-1923. We work with the fiber arts and spinning wheels. Call Marsha Johnson 503- 309- 4223 to sign up.

### **Subsidiary Exercises**

The group that is working with the six basic subsidiary exercises will continue to meet at Twila Rothrock's home, 2525 NE 13th Ave, Portland, OR 97212. For information call Twila at (503) 281-9349 or write her by e-mail at [Twila@spiritone.com](mailto:Twila@spiritone.com). Meeting dates are on Saturdays 9-10 AM: September 8 exercise 4; October 13, exercise 5; November 10, exercise 6 (all together).

## Upcoming Events

### **SEPTEMBER 18-OCTOBER 30**

#### **Tuesdays at Emerson**

Community Education at Shining Star School, 4317 NE Emerson Portland OR 97218 contact Marsha Johnson 503 753-4459. October 16, 9AM Original Play for Adults, Melayna & Marc from Play After Play!; October 23, 7PM; Nutrition & Spiritual Science, Dr. Sigward Elsas; TBA "Who am I, a journey within the light" beeswax candle dipping, lecture, Sacha Etzel.

### **OCTOBER 4 – NOVEMBER 1**

#### **Micha-el Institute – Introductory Course in Anthroposophy**

10/4 The Worlds of Soul & Spirit; 10/11 The Evolution of the Earth; 10/18 Reincarnation and Karma; 11/1 The Task of Humanity; held in the Music Room at Portland Waldorf School, 2300 SE Harrison, Milwaukie. Contact 503 774-4946 or email [johncmiles@usa.net](mailto:johncmiles@usa.net).

### **OCTOBER 6-20**

#### **Veil Paintings and Drawings by Para Winingham**

A painter of over 30 years, Para Winingham shares her world of color and imagination in an art exhibit of veil paintings with mythical, fairy tale, and nature subject matter. Drawings from nature, mandala work, and printed cards will also be on display. Opening reception on October 6 from 2PM to 5PM at Bothmer Hall, 5915 SE Division. For more information call Para Winingham at 503-223-7910

**Sunday, OCTOBER 14****First Class of the School of Spiritual Science**

Bothmer Hall, Blue card required – Discussion at 8:30 AM, class at 9:30 AM sharp. Please contact Jannebeth Röell 503/249-3807.

**Wednesday, OCTOBER 24****Portland Branch Council meeting**

7 PM at the home of Tom Klein and Ruth Klein, 3609 SE Center, Portland OR 97202, phone: 503-777-3176. All Branch members are welcome to attend.

**OCTOBER 25****Hot Flashes and the Bones- A Conversation about Change of Life**

Come for an evening to explore menopause, metamorphosis, moon changes, wise woman. Lynn Madsen, MD will present from a variety of perspectives including both conventional and anthroposophic. Bring your questions—that's where we will start. 7:30-9PM at Dr. Madsen's residence, 2320 SW Benz Farm Ct, Portland OR 97225. Please RSVP to Dr. Madsen tel. 971-404-6862 and for map to be emailed. Cost:\$5.00 donation is requested (for the Rudolph Steiner Foundation). Follow up workshop October 30 ( see calendar)

**OCTOBER 25-27****Seeds of Anthroposophy**

Fall Conference in Portland with keynote speaker Michael Howard and resident speakers John Miles and Beth Wieting. The events will take place at the Shining Star School, 4317 NE Emerson, Portland OR 97218

**Thursday, OCTOBER 25****Seeds of Anthroposophy**

7.00 PM – 9.00 PM Appetizers – Introductory Vignettes and Music. Michael Howard, John Miles and Beth Wieting will give an introduction to the centenary of the Munich Congress and the birth or rebirth of Western Esotericism. See the details for each day below.

**Friday, OCTOBER 26****Seeds of Anthroposophy**

9.00 to 10.10 AM The Refounding of Western Esotericism - a lecture by Beth Wieting  
10.10-10.40 AM Refreshments  
10.40-12.10 PM Workshop with Michael Howard  
1.45-3.15 PM Workshop with Michael Howard  
7.00 PM to 8.30 PM "The Rebirth and Mission of Western Esotericism" A lecture by John Miles

**Saturday, OCTOBER 27****Seeds of Anthroposophy**

9.00 to 10.10 AM Lecture by Michael Howard  
10.10-10.40 AM Refreshments  
10.40-12.10 PM Workshop with Michael Howard  
1.45-3.15 PM Workshop with Michael Howard  
7.00 PM - 8.30 PM "The first century of Eurythmy" – A performance by Portland Eurythmists.

**OCTOBER 26-30****Body Image: Archetype or Archenemy**

Body image is the picture we carry of our body. It plays an important role in how we act and interact and reacted to. Workshop in Bothmer Hall, Portland OR. For information [www.spacialdynamics.com](http://www.spacialdynamics.com)

**OCTOBER 30****Art Sculpture Workshop**

The topic of conversation with Dr Madsen (October 25) will be followed up for those interested in exploring this topic in a non-verbal and experiential way with Jannebeth Röell. No prior experience of sculpture is needed. 7-9PM at Jannebeth Röell, 3135 NE 17<sup>th</sup> Ave, Portland 97212. Please RSVP tel. 503-249-3807. Cost \$20.00

**Friday, NOVEMBER 2****All Souls Day**

7:30 pm, Bothmer Hall, 5915 SE Division St. We will gather together to remember and honor our loved ones who have crossed the threshold. Please arrive early to bring mementos, photos, flowers, candles to decorate the table. Contact: Cheri Munske 503-772-2632.

**NOVEMBER 2-4****Entering the Stream: the Light of Anthroposophy in Adult Education**

The insights of Rudolf Steiner play a significant role in endeavors in many fields of cultural renewal throughout the world today. Biodynamic Agriculture, Anthroposophical Medicine, Spacial Dynamics, Waldorf Education, Camphill Communities and others all share a profound new view of the human being and are making contributions to their disciplines. Educators working in the training of adults in all these fields will be joining to share the unique aspects of their work and to explore some basic questions. What are we learning about human development through our training courses? What is unique about and what are we learning from an anthroposophical approach to adult education and training? What could be gained by sharing our research on best practices in adult education? This weekend conference/colloquium held in Spring Valley, NY November 2, 3 and 4, 2007 will provide an opportunity for adult educators to deepen their understanding of their own and others' approach to working with adults. Sponsored by the Anthroposophical Society, the Council for Anthroposophical Organizations and the Assn. of Waldorf Schools of N. America

**Sunday, NOVEMBER 11****First Class of the School of Spiritual Science**

Bothmer Hall, Blue card required – Discussion at 8:30 AM, class at 9:30 AM sharp. Please contact Jannebeth Röell 503/249-3807.

**Wednesday, NOVEMBER 28****Portland Branch Council meeting**

7 PM at the home of Tom Klein and Ruth Klein, 3609 SE Center, Portland OR 97202, phone: 503-777-3176. All Branch members are welcome to attend.





**STARSTREAM ASTROLOGY –  
ASTROSOPHY**

**DIANE RUMAGE**

Natal Charts  
Progressions  
Transits  
Compatibility

(360) 241-7854  
[drumage@earthlink.net](mailto:drumage@earthlink.net)  
Mon-Sat 9 a.m. – 8 p.m.

**POHALA - A PLACE OF HEALING**

**Family Medicine & Primary Care**

**Julie E. Foster MSN, FNP**

**(503) 572-4196**

Charles Forster and Chiaki Uchiyama  
**Spiral Vortex**  
Transformational Astrosophy



The Pacific Northwest Matrix for Individuation and Esoteric Development through Star Wisdom

[forleochas@aol.com](mailto:forleochas@aol.com) 503-241-2583 USA



**ANTHROPOSOPHICALLY  
INSPIRED PRODUCTS**

**Biodynamic Coffees, Teas, Grains & More!**  
(Great flavor, increased nutrition & shelf life)

**Body Care & Remedies by Dr. Hauschka,  
Weleda & True Botanica – Great Prices!**

**Waldorf Inspired Toys ♦ Dolls ♦ Art Sup-  
plies ♦ Books for Children & Adults ♦  
Cards ♦ Prints & Gifts**

**New from Europe! Beautiful cards and prints ♦  
carved angels and other figures ♦ 2 books illus-  
trated by David Newbatt: Twelve Aspects of Mi-  
chael ♦ The Green Snake & the Beautiful Lily**

**5915 SE Division St. Portland, OR 97206**  
**3-777-1251 [www.steinerstorehouse.com](http://www.steinerstorehouse.com)**

**WALDORF TRAVEL SERVICE**

**Now in Portland to serve all of your travel needs**

**AIR RAIL SHIPS TOURS**

*Student, group and family discounts, Class trips and  
customized private journeys*

UNIQUE GROUP OFFERINGS ESCORTED BY WALTER RICE

**Vancouver Island Cruise, October 29-November 2, 2007**  
Seattle to Nanaimo and Victoria on Celebrity Cruise's Mercury

**Tahiti Cruise, February 24-March 6, 2008**  
Sail on the Star Flyer through the Tuamotus and Society Islands

Serving the "Waldorf World" since 1992

503-233-4053 5316 SE Sherman St, Portland, OR 97215  
[info@waldorftravel.com](mailto:info@waldorftravel.com)

**Apple Blossom Nursery School  
& Apple Blossom Beginnings**



Two beautiful in home care programs.  
One is a new high quality day care specializing  
in children ages 5 months to age 4.  
The other is a pre school offering full daycare.

[AppleBlossomSchool.com](http://AppleBlossomSchool.com)  
Carrie Riley 971-404-9291 Portland, Or  
[crileyteach@aol.com](mailto:crileyteach@aol.com)

**SUPPORT THE  
Portland Branch NEWSLETTER**

**Place Your Advertisement Here!**

**\$120 for 12 Months**

Marion Van Namen  
music therapist



**Octave**  
music for all

5705 SE Belmont Street, Portland, OR 97215  
[marion@octavemusictherapy.com](mailto:marion@octavemusictherapy.com) [503]956-4046