



The Presence of the Dead on the Spiritual Path

Excerpt from Lecture 3 – Awakening Spiritual Thoughts Basel, May 5, 1914 – In Anticipation of All Souls Day, November 2

...Let us think about the nature of our relationship to the dead we were connected with in life, whom we can clearly visualize, and of whom we often think. What is our relationship to those who have died, apart from offering them spiritual nourishment by taking spiritual thoughts into sleep? What is our relationship with the dead in waking life?

If the dead draw nourishment from the content of our souls in sleep, then every thought that enters the spiritual world and is concerned with it and its beings can be perceived by the dead. On the other hand, if we do not cultivate such thoughts, the dead are deprived of them. Ideas related only to the material world, to things in nature, live in our souls in such a way that the dead cannot perceive them. These ideas, however scholarly or wise, are meaningless for the dead. As soon as we have thoughts about the spiritual world, not only the living but also the dead have immediate access to them. That is why we have often recommended that our friends read silently to an individual with whom they were closely connected and who has passed on to the spiritual world. One forms an image of the person and then, while thinking about him or her, one reads on a subject related to the spiritual world. The dead can then participate in the process, which is important. Although the dead are in the world we know through spiritual science, thoughts about the spiritual world must be

produced on earth. The dead must perceive more than the spiritual world around them; they need the thoughts of those who live on earth, thoughts that for them are like perceptions.

The most important and the most beautiful thing we can give the dead is to read to them in the way I have just described. We can give something to the dead by reading on a spiritual subject. And if you doubt that this is useful, since the deceased is in the spiritual world anyway, just think that we can be surrounded by things and beings in the physical world, yet may not understand them. The understanding has to be acquired. Thus, although the deceased is in the spiritual world, thoughts from earth have to flow to him. Illuminating thoughts must flow up to those regions where the dead dwell, just as rain streams down from the clouds as a blessing to the physical world.

All these examples show that it is infinitely important even for the physical world to experience the spiritual world in thought. Obviously, we cannot wait until after death for knowledge about the spiritual world. In truth, a thorough study of the spiritual world shows us that we are not on earth for nothing; we are here to learn something that can be learned only on earth — a possession of such value that the living can give it even to the dead.

The Portland Branch of the Anthroposophical Society

Invites you to

Save The Date!

See the Calendar & fliers for more info.

October 18	Living Anthroposophy – Awakening a Culture of Peace, public lecture
October 18-19	Living Anthroposophy – Awakening a Culture of Peace, School of Spiritual Science
November 2	All Souls Observance
November 6	Marie-Laure Valandro Reception/Talk
December 4-7	Enlivening Understanding Through Color, School of Spiritual Science
December 4	Rainbow Phenomena and Color in Nature



Dear members of the Portland Branch of the Anthroposophical Society in America,

The Western Regional Council is pleased to inform you that we have asked Rebecca Soloway to join our Council, and she has accepted.

As you know, Rebecca has recently moved to the Portland area from the East coast, where she had been active for many years in the Anthroposophical Movement, helping to establish an active group of the Society in Long Island, and as a Class Holder for the School of Spiritual Science in Garden City.

Having known Rebecca since the early 1980s in Denver, Colorado, I was most heartened when she moved to the west, making her eligible to join the Western Regional Council. Our other WRC members also felt she would help to strengthen and deepen the work of our Regional Council and serve the members in the west. She brings an anthroposophical depth, a social warmth and a willingness to serve the kind of group and branch work that the WRC finds so needed in the West.

We warmly welcome Rebecca and know that she will also be an asset to the work of the Portland Branch. Our best wishes to each of you in the work ahead.

Warmly,

Joan Treadaway

for the Western Regional Council.

October 5-11; Verse 27, Autumn

When to my being's depths I penetrate,
Expectant yearning wakes and stirs in me
To find myself, Self contemplating,
As gift of summer sun, a seed
That warming lives in autumn mood
As germinating force of soul.

October 12-18; Verse 28

I feel my being, vivified anew,
Widen to far horizons of its own.
Filled with new force, the radiance of my thought –
Coming from soul's Sun power –
Can solve the mysteries of life,
And grant fulfillment now to wishes
Whose wings have long been lamed by hope.

October 19-25; Verse 29

To fan the spark of thinking into flame
By my own strong endeavor,
To read life's inner meaning
Out of the cosmic spirit's fount of strength:
This is my summer heritage,
My autumn solace and my winter hope.

October 26-November 1; Verse 30

There thrive within the sunlight of my soul
The ripened fruits of thinking;
To self-awareness' certitude
The flow of feeling is transformed.
I can perceive now joyfully
The autumn's spirit-waking:
The winter will arouse in me
The summer of the soul.

The 2014 Natural Science/Mathematics/Astronomy Section Conference, "A Path Towards Understanding the Imponderable in Nature: Enlivening our Understanding Through Color," will take place this year in Portland, Oregon. (see calendar listing) Attached to this newsletter you will find the 2014 conference schedule, registration form, costs, and logistics around the conference. The conference is open to members of the School for Spiritual Science who are working out of science or math or astronomy. For this particular meeting, artists who have participated in the color studies at Jannebeth Roell's studio over the past couple of years, who are also members of the School for Spiritual Science, are also welcome to participate. Please register early or indicate your interest through the website contact page. Space is limited to 15 in Jannebeth's studio.

We will continue our theme of inner capacity building toward a qualitative science, through the practice of what Rudolf Steiner referred to as "feeling--understanding" in our experiencing of color. We have been studying the collection of lectures by Rudolf Steiner, **Colour**, Rudolf Steiner Press, 1992, reprinted 2008, 217pp, ISBN 978 1 85584 085 0. Jannebeth Röell will lead us in this study. We will continue to hone our phenomenological methods of research and to develop new organs of perception. Some of you will remember the work we did in 2006 and 2007 with Jannebeth on Dick van Romunde's seminal work, *About Formative Forces in the Plant World*. That first year we worked intensively with the leaf, and the following year with the flower. These were deeply rewarding and valuable conferences. We are pleased to be with Jannebeth again, working now on the inner nature of color. We are also very pleased that Johannes Köhl will be joining us again this year and will bring his research on color in nature. Please contact James Lee by email at anthroposophynow@comcast.net if you have any questions.

The Light-filled Etheric Tone of the Lyre as a Gift to the Cosmos

~By Chiaki Uchiama

This past July 30 through August 3 the national Summer Lyre Conference was held at the Cedarwood Waldorf School in Portland, Oregon, at which I teach Japanese language. Mr. Hajime Kira, from Tokyo Japan, brought his mission as a master steward of the lyre, a unique instrument with which he has an intimate soul connection.

Alongside his effective skill building teaching, Mr. Kira's focus was "listening" and "spacial awareness". He identified the backside of our hand as a "listening organ", which maintains an unbroken connection with the inaudible, etheric tones from the cosmos; while the palm side of the hand carries an intention to produce audible tones through conscious contact with the physical strings of the instrument. He demonstrated various ways to "invite" the etheric vitality of the tones from the cosmos through intentional "listening" and expansion of consciousness to the surrounding space. He designated intellectual thinking, physical tightness of our jaws and muscles, and mechanical movement as key factors which undermine our ability to "listen", and thereby kill the life forces within tones. He encouraged the participants to release all the tension resulting from our physical, intellectual, and emotional clinging in order to allow the tones to stream through our limbs. He especially emphasized the importance of overcoming the intellectual needs of the head. He said, "We practice playing the lyre everyday so that we become able to play it as though the instrument were a part of ourselves. Just as we do not think in order to breathe air or pulsate blood, nor do we control these processes, our lyre playing should come to function as though it were a part of our rhythmic system."

Although Mr. Kira is a quiet and humble person his teaching was dynamic and penetrated with purposeful will throughout the conference. Through his masterful guidance a distinct improvement in the quality of tones produced by the students was evident. These tones were refined each day, and by the end of the conference they seemed filled with "light".

In Greek mythology the lyre was known as the instrument of the Sun-God, Apollo. This Sun-instrument fell out of use and disappeared for a long time, but was eventually "resurrected" as a Christ-Sun instrument in 1926 through Rudolf Steiner's indications.

As we are presently living in the age of the Consciousness-Soul the development of the heart, as an etheric organ for new quality of consciousness, is expected. The etheric heart is a receptive organ. It

consciously "listens" and actively reflects the surrounding space. Its development requires a dedicated commitment to disciplining the intellectual needs of the head, opening our etheric heart as its doorway, and actively inviting the cosmic forces (spiritual hierarchies) to work through us. In this regard Mr. Kira's lyre teaching was directly applicable as a training for the Consciousness-Soul.

When we play the lyre there are two spaces we encounter -- the outer, or surrounding space, and the inner space, which is the space inside of the soundbox of the instrument, divided by the strings. If we become able to play the lyre through an etheric-heart consciousness, the two spaces would mirror each other. As the human being (microcosm) is the mirror of the whole universe (macrocosm), a lyre can become a microcosm of the tonal world of the starry universe, if the musician has developed their etheric heart. When this is achieved the two worlds will become united in harmony through a lemniscatory "breathing".

Although the lyre is a quiet and humble instrument, its future potential is vast. This instrument is waiting for the human being to become evolved to the point that its light-filled tones will resonate back to the cosmos from the earth. Likewise the starry universe is waiting for the human being to develop to the point that our speaking will resonate back to the cosmos from the earth, as indicated by the Rudolf Steiner's verse below.

The Stars once spoke to Man.
It is World Destiny they are silent now.
To be aware of this silence
Can become pain for Earthly Man.
But in the deepening silence
There grows and ripens
What Man speaks to the Stars.
To be aware of this speaking
Can become Strength for Spirit Man.

-- Rudolf Steiner, on Christmas day in 1922 --

Living Anthroposophy – Awakening a Culture of Peace with Bert Chase

One hundred years ago, as the first Great War broke out in Europe, Rudolf Steiner found it necessary to close the Esoteric School at the Goetheanum, a step that made it possible for the renewal of the mysteries at the Christmas Foundation Meeting. Working with the theme of the Michaelmas Conference to be held this year at the Goetheanum, we will strive to bring clarity to living questions regarding our work in the Society and School of Spiritual Science. How do we meet one another within our life of Anthroposophy and what are the faculties we are trying to awaken, as individuals and in what lives between us, that lead into the future? Please join us for a presentation and conversation. (see calendar)



Marie-Laure Valandro was born in 1948 and spent her childhood in Bourgogne, Morocco, Algeria, and Bretagne. At fifteen, she moved with her family to Boston, where she received a B.A. in modern literature, romance languages, and education and taught in the

Boston public school system. Later, she moved to Vermont, and obtained an M.A. in literature. At twenty-three, Marie-Laure returned to Paris to study at The Sorbonne, to teach and to travel around Europe to various Christian Holy sites. She later moved to Tehran to teach technical English and to tour throughout the Eastern world, studying Sufism, Zoroastrianism, Islam, Buddhism, and Hinduism as seen through the eyes of its believers and through visits to holy sites. Marie-Laure returned to the United States to care for her son. She lived in the community of Wilton, New Hampshire, where she first

encountered Anthroposophy. She ended her school teaching to care for her daughter, son, and husband, a medical doctor. Meanwhile, she continued to travel and trek in South America, both alone and with her children. Later, she moved to Wisconsin and began the Liane Collot d'Herbois training in painting. On her family farm in Wisconsin, Marie-Laure uses biodynamic methods and has developed master gardens, vegetable gardens, herb gardens, and an orchard. She has also established a painting studio, where she creates large veil paintings. She later moved from Wisconsin to a post-and-beam house built by her son in the Canadian Rockies of British Columbia. She now lives in Bellingham, Washington where her studio is located. Her goal is to continue walking across this beautiful Earth, meeting people with love and sharing her journeys in meditative books, sprinkled with insights from Rudolf Steiner's works and the many talented students of his teachings. She continues to make large veil paintings to "heal people and spaces."



MARIE-LAURE VALANDRO

AT THE ART HALL
thearthall.wordpress.com

OPENING RECEPTION
 FIRST THURSDAY
 NOVEMBER 6TH, 2014
 5:30-8:00PM

ARTIST TALK
 "THE ARTS"
 6:00PM



CEDARWOOD WALDORF SCHOOL
 3030 SW SECOND AVENUE
 PORTLAND, OR 97201

EXHIBIT OPEN TO THE PUBLIC BY APPOINTMENT
 THROUGH DECEMBER 3RD. PLEASE CONTACT
 ROBIN LIEBERMAN AT 503-222-1192.



Portland Branch Calendar

September 2014

First Class of the School of Spiritual Science – Lesson Five

Sunday, October 12, 9:30 am sharp (no admittance after the class starts) • Bothmer Hall, 5919 SE Division St, Portland, 97206, Contact Diane Ramage at 971-271-7479 or Cheri Munske at 503- 484-4133 Blue card required. Second Sunday of each month.

Schedule for the year: 10/12 Lesson Five; 11/9 Lesson Six; 12/14 Lesson Seven

Portland Branch Council Meeting

Monday, October 13 • 2606 SE 58th Ave. Contact 503-775-0778 • email valerieannhpx@aol.com.

All Branch members are welcome to attend, and/or to call us with agenda items, proposals, suggestions, or to observe. Meetings are on the second Monday of each month.

New Spacial Dynamics Institute Training Course

Begins October 17-21 • Camp Kuratli in Boring, Oregon, about 20 minutes outside Portland • for more information and to register www.Spacialdynamics.com

The Spacial Dynamics Institute will be beginning a new training course in the Portland area. Ready for your next step? See newsletter article and attached flier.

Living Anthroposophy – Awakening a Culture of Peace with Bert Chase: For Members of the School for Spiritual Science – Blue Card Required

Saturday October 18, 2:30 – 7:00 pm; Sunday, October 19, 9:30 am – 12:00 pm • Bothmer Hall, 5919 SE Division St, Portland Contact Cheri Munske, 503 484-4133

One hundred years ago, as the first Great War broke out in Europe, Rudolf Steiner found it necessary to close the Esoteric School at the Goetheanum, a step that made it possible for the renewal of the mysteries at the Christmas Foundation Meeting. Working with the theme of the Michaelmas Conference to be held this year at the Goetheanum, we will strive to bring clarity to living questions regarding our work in the Society and School of Spiritual Science. How do we meet one another within our life of Anthroposophy and what are the faculties we are trying to awaken, as individuals and in what lives between us, that lead into the future?

Living Anthroposophy – Awakening a Culture of Peace with Bert Chase

Saturday October 18, 7:30 pm • Bothmer Hall, 5919 SE Division St, Portland • Evening presentation for the Anthroposophic community and friends – open to all • Contact Cheri Munske, 503 484-4133

See description above.

All Souls Observance

Sunday, November 2, 4:00 pm • Bothmer Hall, 5919 SE Division St, Portland • Contact Valerie Hope valerieannhpx@aol.com or Lucia Mello, melloalucia@gmail.com

Join us for a remembrance of your dead. You may bring pictures or other items associated with those you would like to remember. They can be placed on the table with candles that will be provided. To deepen our understanding we will read together a lecture by Rudolf Steiner on staying connected with those who have crossed over.

Marie-Laure Valandro Veil Painting Exhibit - Opening Reception and Talk

November 6, 5:30 pm – 8 pm ; Ms. Valandro's talk on *The Arts* at 6 pm • Cedarwood Waldorf School Art Hall, 3030 SW Second Ave. Portland 97201 • Contact Robin Lieberman, 503-222-1192 • Open to the public • no charge

We are honored and excited to be presenting the exquisite veil paintings of Marie Laure Valandro, an Anthroposophic painter in the tradition of Liane Collot-d'Herbois. We invite you to join us for the opening reception and to hear Ms. Valandro's vital talk on The Arts. This exhibit will be on display at Cedarwood Waldorf School's Art Hall through December 3.

Marie-Laure Valandro Veil Painting Exhibit

Thursday, November 6 – December 3 • Cedarwood Waldorf School Art Hall, 3030 SW Second Ave. Portland 97201 • Contact Robin Lieberman, 503-222-1192 • Open to the public

We are honored and excited to be presenting the exquisite veil paintings of Marie Laure Valandro, an Anthroposophic painter in the tradition of Liane Collot-d'Herbois. We invite you to join us for the opening reception and to hear Ms. Valandro's vital talk on The Arts. This exhibit will be on display at Cedarwood Waldorf School's Art Hall through December 3.

A Path Towards Understanding the Imponderable in Nature: Enlivening our Understanding Through Color

Thursday, December 4 – Sunday, December 7 • at Jannebeth Roell's studio, Portland, Or. • Contact James Lee by email at anthroposophynow@comcast.net

Attached to this newsletter you will find the 2014 conference schedule, registration form, costs, and logistics around the conference. The conference is open to members of the School for Spiritual Science who are working out of science or math or astronomy. For this particular meeting, artists who have participated in the color studies at Jannebeth's studio over the past couple of years, who are also members of the School for Spiritual Science, are also welcome to participate. Please register early or indicate your interest through the website contact page www.naturalsciencesection.org. Space is limited to 15 in Jannebeth's studio. If a larger venue becomes necessary, we would need time to confirm those arrangements. We will continue our theme of inner capacity building toward a qualitative science, through the practice of what Rudolf Steiner referred to as “feeling--understanding” in our experiencing of color. We have been studying the collection of lectures by Rudolf Steiner, *Colour*, Rudolf Steiner Press, 1992, reprinted 2008, 217pp, ISBN 978 1 85584 085 0. See **article in this newsletter**.

Rainbow Phenomena and Color in Nature with Johannes Kühl

Thursday December 4, 7:30 pm • Cedarwood Waldorf School, South Space, 3030 SW 2nd Ave, Portland 97201 • Contact James Lee at anthroposophynow@comcast.net if you require further information

Johannes Kühl will make a presentation on the topic of rainbow phenomena and color in nature. This public event is hosted by the Natural Science Section and the Portland Branch of the Anthroposophical Society in America. The talk will be followed by questions, discussions, and refreshments. The event will be brought to a close by 9:30 PM. Johannes Kühl will be visiting us from the Goetheanum in Dornach, Switzerland where he is a leader of scientific work. Donations will gladly be accepted.

Ongoing Local Activities and Study Groups

First Class of the School of Spiritual Science • Second Sunday of the month

9:30 am sharp (no admittance after the class starts) • Bothmer Hall, 5919 SE Division St, Portland, 97206 • Blue card required. Contact Diane Rumage at 971-271-7479 or Cheri Munske at 503 772-2632

Council Meetings of the Portland Branch • Second Monday of the month

7-9 pm • 2606 SE 58th Ave., Portland • Contact Valerie Hope, (503) 775-0778, valerieannhpx@aol.com

All Branch members are welcome to attend, and/or to call us with agenda items, proposals, suggestions, or to observe.

Mystery Dramas with Speech-Formation Exercises

Beginners Welcome, NE Portland • Those interested please contact Diane Rumage by e-mail at drumage@comcast.net or by phone at 971-271-7479.

Portland Waldorf School Community Choir • Friday Mornings

8:45-10:15 am • Portland Waldorf School, 2300 SE Harrison St., Milwaukie, in the Orchard Room • Free will donations gladly accepted, all voices are welcome. Contact www.portlandwaldorf.org • pws_choir-subscribe@yahoo.com (503) 654-2200

The Spiritual Hierarchies and the Physical World • First and third Tuesdays

7:30-9 pm • 3046 NE 33rd Ave. • contact Donna Patterson and Bob Kellum, 503-331-7393 • All are welcome

World Economy Study Group • Second and Fourth Wednesday of the month starting November 13, 5:30-7pm

5:30-7 pm • 827 NE Alberta St, Good Life Medical Center. • Contact Michael Givens, 503-609-0890

Please join us in a diverse study group around the principles and practices of Associative Economics. We will be reading and discussing Rudolf Steiner's 14 lectures on the “World Economy”. The recommended text is “Economics: World as One Economy”, translated by Dr. Christopher Houghton Budd. It can be found at <https://www.cfae.biz/publications/shop/>

Anthroposophical Leading Thoughts • First Monday of the Month

7:45-9:00 pm • Bothmer Hall, 5919 SE Division St., Portland 97206 • Contact Jerry Soloway 503-908-7615 or jrsoloway@hotmail.com

Please join us in lively discussions centered on Rudolf Steiner's *Leading Thoughts – Anthroposophy as a Path of Knowledge: The Michael Mystery*. These short paragraphs, written in the last year of Rudolf Steiner's life, were meant to guide members in their study and discussion of Anthroposophy.

Waldorf Education and Teacher Training Lectures and Courses

Conducted throughout the year by the Micha-el Institute. Contact John Miles, 503-774-4946 johncmiles@usa.net

Waldorf Teacher Education, Eugene

September-June • Eugene Waldorf School • Contact Lee Ann Ernandes @ message phone, 541-686-9112

Preparing Waldorf teachers for their future vocation since 1990.

Teachings Of These Trees

The atmosphere breathes
A cooling summer breeze
Through the green and shimmering cloaks
Of these rooted and towering trees.
Limbs swaying,
Waving their farewell to the sun
As it rests, melting into the horizon.
While colors and shadows play,
They welcome the change of day.
I should be so trusting.

Through these days of sweltering heat,
These noble figures stand,
As do the corn and the wheat.
Though they do not die with season's end,
But await Autumn's cleansing.
Already they release an occasional leaf
Just for the joy of watching it glide,
of watching it ride
This lazy summer air.
Soon they will loose all
with no feeling of grief, nor sign of beware.
I should be so giving.

As will come and go the loss of Autumn,
So too, the repressed life of Winter.
The air grown brisk and silver
As the mother would choose to tint her.
These trees, bodies standing naked,
Swathed only by the strangling freeze,
Submerged deep in their solitary slumber,
Remain in waiting, remain in ease.
I should be so patient.

I find that life is a study
Of the teaching of these trees,
As man and tree alike answer to one who oversees.
He gives us breath, and we all return to dust.
O, may our days on earth with light and color be blessed,
As are these and every tree so divinely dressed
In new life and glory brought by Spring,
Be we given to patience, generosity and trust.
I should be so faithful.

dedicated to folks at HOP, with love and gratitude, from
Christine Badura October 6, 2004

The **Portland Anthroposophic Times** is published monthly to serve Branch members and friends. To learn more about the Portland Branch of the Anthroposophical Society, contact Diane Ramage at 971-271-7479.

To submit an article or a calendar item, email it to both Valerie Hope, valerieannhpdx@aol.com and Wes Burch, truelion@comcast.net. The deadline for submissions is the 15th of the month. Items selected for publication may be edited for style, content and length.

To sign up for our email list, or contact the Branch Council, go to <http://www.portlandbranch.org/contact>

Newsletter co-editors are Wes Burch & Valerie Hope, Seth Miller is our webmaster, and Ruth Klein is our treasurer.

The newsletter and calendar are posted on the Branch website, www.portlandanthroposophy.org. Paper copies are available at the Takacs, Pohala and Healthbridge Clinics; and the Cedarwood, Michael & Portland Waldorf Schools, and Swallowtail School.

The Portland Branch thanks the following Members & Friends for their Dues and Generous Donations in 2014: Karen Arthur, Christine Badura, Betty Baldwin, Virginia Berg, Sandra Burch, Wes Burch, Sara Case, Yvonne DeMaat, Mia Ellers, Lauren Johnson, Bob Kellum, Donna Kellum, Ruth Klein, Tom Klein, James Knight, James Lee, Robin Lieberman, Patricia Lynch, Cheri Munske, Robin O'Brien, Padeen Quinn, Diane Ramage, Jeff Rice, Jannebeth Roell, Diane Schell-Rowley, Jerome Soloway, Rebecca Soloway, Barbara Strong, Elizabeth Webber, Neil & Cindy Weinberg **Please submit your Branch membership dues (\$50) each January, or your donations, to: The Portland Branch c/o Ruth Klein, 3609 SE Center, Portland, OR 97202**

Physical Medicine & Injury Rehabilitation



Susan Schmitt, M.D.

Joan Takacs, D.O.

John Takacs, D.O.



The clinic offers alternatively extended medicine including Physical Medicine and Rehabilitation and Comprehensive Family Practice. The physicians utilize holistic principles that include the Anthroposophical world conception and its medical modalities, movement principles from Spacial Dynamics®, Feldenkrais®, Intermuscular Stimulation (IMS), Musculoskeletal Ultrasound and refined hands-on techniques to augment alternative and mainstream medical approaches in diagnosis, treatment and prevention of illness and injury including work related injuries, personal injuries, motor vehicle injuries and sports injuries.

5909 SE Division Street, Portland, OR 97206


www.anthroclinic.com 503-234-1531



curative
painting
and
collaborative
psychotherapy
for
individuals
and
couples

Robin Lieberman
MSW, LCSW


503.222.1192 robinlieberman.net



Primary Care Infused with
the Aloha Spirit integrating
Anthroposphyic Medicine.

Julie E Foster, MSN, FNP
3848 SE Franklin St.
Portland, OR 97202
503.572.4196
pohalaclinic.com

Pohala
A Place for Healing



Waldorf Travel Service

Walter Rice, CTC
Travel Magician

5316 SE Sherman St.
Portland, OR 97215
800-328-7266
503-233-4053
fax: 503-232-7224

Incredible Journeys Since 1975 walter@waldorftravel.com

Place Your Ad Here!

And Support the Portland Branch

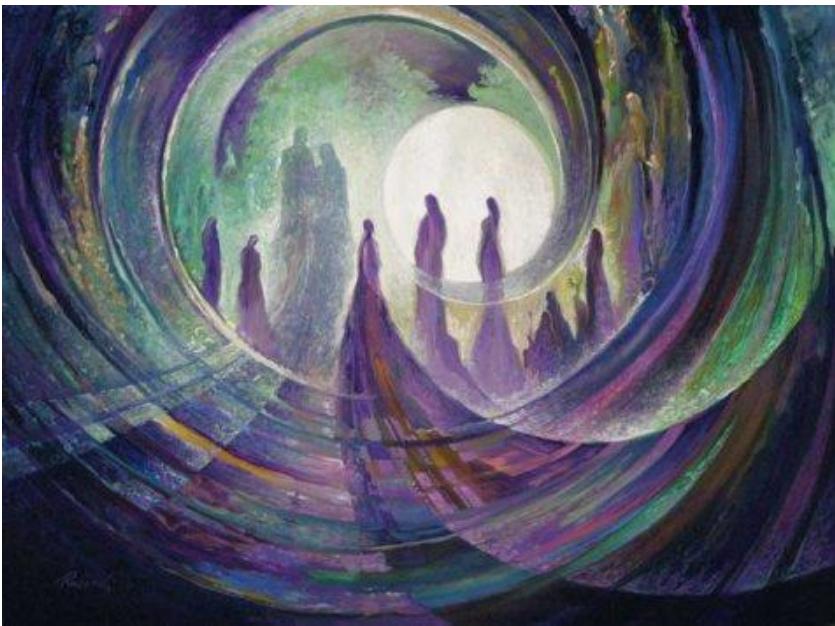
Contact Valerie Hope at
valerieannhpdx@aol.com

Embryo In Motion: Understanding Ourselves as Embryo

4-DVD Set Now Available With Jaap van der Wal, PhD, MD

This beautiful 4-DVD set was professionally recorded live in Portland, OR, June 3–6, 2010.

To learn more about the 4-DVD set and for instructions on how to order it, go to the “shop” portal on the Portland Branch website at www.PortlandAnthroposophy.org.



All Souls Observance

Sunday, November 2, 2014
4pm

Bothmer Hall, 5919 SE División St.

Contacts:

Valerie Hope, valerieannhpdx@aol.com

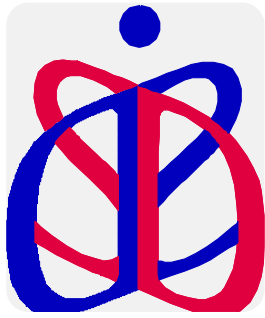
Lucía Mello, melloalucia@gmail.com

Into the fields of Spirit will I send
The faithful love we found on Earth,
Uniting soul with soul.
And thou wilt find my loving thought
When from the Spirit-lands of light
Thou hither turn thy seeking soul
To find what thou dost seek in me.

~ *Rudolf Steiner*

Join us for a remembrance of your dead. You may bring pictures or other items associated with those who you would like to remember, to be placed on the table with candles that will be provided. To deepen our understanding we will read together a lecture by Rudolf Steiner on staying connected with those who have crossed over.

Sponsored by the Portland Branch of the Anthroposophical Society



**SPACIAL
DYNAMICS
INSTITUTE**

**NEW LEVEL I
TRAINING
PROGRAM
FALL 2014**



BEGINS:

MECHANICVILLE, NEW YORK

OCTOBER 9-13, 2014

PORTLAND, OREGON

OCTOBER 17-21, 2014

AUSTIN, TEXAS

NOVEMBER 6-10, 2014

CONTACT:

129 Hayes Road, Schuylerville, New York 12871 518-695-6377 518-695-6955 (f)
info@spacialdynamics.com www.spacialdynamics.com

**Registration for the
Natural Science/Mathematics-Astronomy Section Conference**

Thursday, December 4th through Sunday, November 7th, 2014

at The Studio of Jannebeth Röell

3135 NE 17th Ave, Portland, OR 97212-2317

Name _____

Address: _____

Telephone number(s): _____

Email address: _____

Conference Registration Fee:

\$250 if mailed by October 29th; \$300 if mailed after October 29th _____

(This fee includes three catered lunches, refreshments between sessions, and Johannes Kühl's public lecture on Thursday evening,.)

Your early enrollment will be very helpful in planning this event! Thank you!

Donation to the Section (to support travel assistance, etc.) _____

Total Enclosed _____

Mail registration form to: Natural Science Section c/o Barry Lia, 9314 40th Ave NE, Seattle, WA 98115.

Make payment by check: enclose check payable to "Natural Science Section."

Or make payment online: go to www.naturalsciencesection.org and click the "Donate" button on the "More Information for Members" conference page, and then on PayPal enter "Conference 2014" in the "Purpose" box.

Travel Assistance:

We have a limited amount for transportation assistance. Up to 1/2 of the transportation expenses will be considered. Receipts will be required for reimbursement.

I request travel assistance in the amount of _____

Sharing Research at the conference: I would like to exhibit/present my research at the conference and request 15 minutes time or more and space at a table for this purpose:

Topic: _____

Meals:

Refreshments will be provided during breaks. Catered lunch will be provided on Friday, Saturday, and Sunday.

Dinners are not included in the registration fee, but we will make reservations for evening dinners. We will also have a list of breakfast places within walking distance.

Lodging:

Homestays nearby will be available on request and subject to availability. Local families typically rent rooms for \$35 per night. For local homestay lodging information *only*, contact James Lee, anthroposophynow@comcast.net.

Please make your own arrangements for the following:

Georgian House Bed & Breakfast (2 blocks from the studio)

Address: 1828 NE Siskiyou St, Portland, OR 97212

Phone:(503) 281-2250

www.thegeorgianhouse.com

A Painted Lady Inn Bed & Breakfast (6 blocks from the studio)

Address: 1927 NE 16th Ave, Portland, OR 97212

Phone: (503) 335-0070

www.apaintedladyinn.com

Lion and the Rose Victorian B&B Inn (8 blocks from the studio)

Address: 1810 NE 15th Ave, Portland, OR 97212

Phone: (503) 287-9245

www.lionrose.com

Residence Inn Portland Downtown/Lloyd Center (12 blocks from studio)

Address: 1710 NE Multnomah St, Portland, OR 97232

Phone:(503) 288-1400

<http://www.marriott.com/hotels/travel/pdxlc-residence-inn-portland-downtown-lloyd-center/>

Conference transportation:

If you can tell us where you will be staying, we will try to arrange carpools.

I will be staying at: _____

Will you have an automobile at the conference? _____

Ground transportation from Portland International Airport (PDX):

Trip Planner for trips anywhere in Portland, see: <http://www.trimet.org/index.htm> Take MAX Red Line from the airport to the Rose Quarter Transit Center (29 min). Then take Bus Route 8 (north) to NE 15th and Siskiyou (10 min). Short walk to 3135 NE 17th.

Taxi would be about \$25.

SCHEDULE

2014 NATURAL SCIENCE SECTION MEETING Portland, Oregon December 4th – 7th

A Path to Understanding the Imponderable in Nature: Enlivening Our Understanding through Color

Time	Thursday, December 4 th	Friday, December 5 th	Saturday, December 6 th	Sunday, December 7 th
8:00 – 9:30 AM		Exercise Work on Theme (Jannebeth Röell)	8:30 Conversation on Class Lesson	8:30 Conversation on Theme
9:30 – 10:00 AM		Break	Break	Break
10:00 AM – 12:30 PM		Exercise Work on Theme (Jannebeth Röell)	Exercise Work on Theme (Jannebeth Röell)	Members Reports Future Work of the Section Closing
12:30 – 2:00 PM		Catered Lunch	Catered Lunch	Catered Lunch
2:00 – 3:30 PM		Exercise Work on Theme (Jannebeth Röell)	Exercise Work on Theme (Jannebeth Röell)	
3:30 – 4:30 PM		Break	Break	
4:30 – 5:30 PM	Registration	Business Meeting	Painting Exercise (Jannebeth Röell)	
5:30 – 7:15 PM	Dinner – On Your Own	Dinner – Reservations	Dinner – Reservations	
7:30 – 9:00 PM	7:30 Welcome 7:45 / Public Talk Rainbow Phenomena by Johannes Köhl Questions / Discussion/ Refreshments	Class Lesson 17	Presentation by Participants on the Theme (Jannebeth Röell)	