



The Twelve World Views and Anthroposophy

By Thomas Meyer, who will speak on this topic in Portland in September

Thus the developing human "I",
Forgetting itself and
Mindful of its origins,
Speaks to the Cosmic All:
If I can free myself
From the chains of personality
I will fathom my essential being
In You.

Calendar of the Soul, 3rd week, April 21-27

Dear Friends, we have just heard a verse from the *Calendar of the Soul* that fits perfectly with our theme for today. I hope this will become clear during the course of my talk. The subject of this lecture encompasses the twelve worldviews, with their seven moods and three tones, and then concludes with the most important element connected with the worldviews – namely *Anthropomorphism*. As we heard in the verse, freeing oneself from the bounds of self is a concept that is also valid when considering the one-sidedness of worldviews. The one-sidedness of a worldview does not originate with our higher being, but from our subjective personality; we might also say it originates from our lower self or lower "ego." We can make a concrete effort to acknowledge our peculiarities in the form of one-sidedness and overcome them in this arena of worldviews and their moods.

I would like to begin with a quote by Egon Friedell that was submitted by a reader of the *Der Europaer*: "One should not ask a thinker *which* point of view he or she has, but *how many* points of view one has. In other words, is that person's mental apparatus extensive or is it narrowly focused?" This statement was made by Friedell in his book *Quarry*, in the chapter "What is Truth?"

Now we must encounter a basic prerequisite for all world views. A thinker should not develop only one distinct point of view, but instead should strive for a variety of worldviews.

Each thinker – and we are all thinkers – wants to find a worldview. Rudolf Steiner showed us that there are,

in principle, twelve worldviews, twelve doors into reality, so to speak. Each point of view seeks out what is true or real from its own perspective.

Rudolf Steiner gave the essential spiritual-scientific lectures on this theme in *Human and Cosmic Thought* half a year before the start of World War I. This cycle of lectures was another attempt to contribute to peace among nations. To contemplate and work with the twelve worldviews and achieve mobility with them, to let go of the longing to hold onto and represent only one point of view, is a subject closely connected with the question: how is it possible to achieve peace among human beings? It is intrinsic in human nature to represent one-sided views that can be argued, even if it might be enough to understand the other person's point of view. It makes no sense to argue a point of view. It is more meaningful to ask if the point of view is the best one for a certain situation. One-sidedness in worldviews leads to habitual, repetitive action.

Rudolf Steiner wanted to give an impulse for versatility and universality in thinking. Naturally, he did not intend to stimulate vague concepts, but to stimulate sharp, clear thinking that, at the same time, becomes mobile.

*Excerpted from a chapter in Thomas Meyer's book, **Representative Men in the Light of Anthroposophy.***

See the box below and the calendar for details.

**The Portland Branch of the Anthroposophical Society
invites you to**

Save The Date!

Thomas Meyer, of Basel Switzerland

- **Friday, September 13:** The Temple legend and its completion by Rudolf Steiner
- **Saturday, September 14:** The Twelve Cosmic Viewpoints
- **Sunday, September 15:** The Michael School

All lectures at 7:30 pm, Bothmer Hall

Sunday, September 29, 7pm: Michaelmas Celebration: In Search of the Michael Impulse

Saturday, November 2, 7:30 pm: All Souls Observance

For more information about these branch-sponsored events, and other events and initiatives in our community, see the calendar section of this newsletter or visit the branch website.

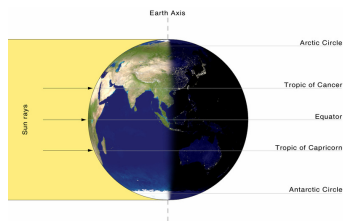
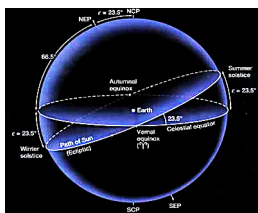


THE GLYPH OF VIRGO

BY DONNA KELLUM



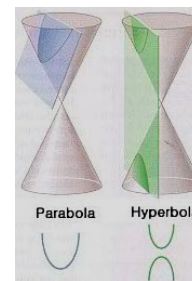
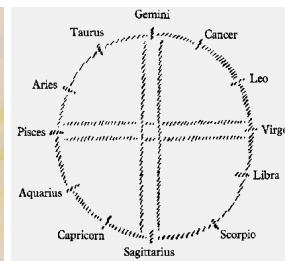
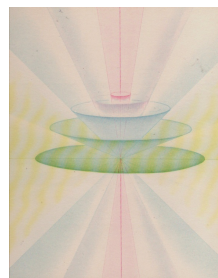
From mid September to mid October is the "virgin time" when the ripened fruit sugars, full of the warm, active sulfurization processes of summer-life, are returning now to incubate in the womb of mother earth. Virgo's glyph is a repetition of the Leo forces reaching out, but now with the infinite figure-eight depicting literally a new twist. Dennis Klocek describes the two little circles at the end of the Virgo glyph as a lemniscate which represents the rhythmical and interminable alternation of fruiting and seeding which occurs at this time every year as Nature goes back inside Herself to multiply her summer-fall energies. On the autumnal equinox, occurring on September 22nd when the Sun in Virgo crosses the celestial equator moving southward, "the veil is thinnest" with day and night equal in duration everywhere on Earth, as Sun and Earth "touch" each other in communion.



As the spiritual forces of Nature withdraw from the surface and penetrate inward, the leaves and seeds dry up and mineralize outside in the cold, and I too spend more time inside by the fire. Having worked in my garden with more consciousness through the signs from Aquarius to Leo, I notice a deeper reverence for the star-forces growing in me now in my "crone years"--a whole new awakening to fertility.

I can remember a sense of awe and hope during "the setting of spring in Aquarius" years ago when my sister and I discovered fresh green ferns suddenly unfurling among the wild violets in the woods. I remember feeling an openness and trust in "the awakening, rising forces of nature that were in dynamic accord but not yet fully formed" at that time. It makes me appreciate a little better what the people, living at that same stage of youthful innocence in human evolution, might have experienced during the ancient Aquarian epochs when "the Jahve-god", who planted the seed of "I AM" was considered to be the "Ruler of Earth". We watched our dad plow our garden, plant the seeds

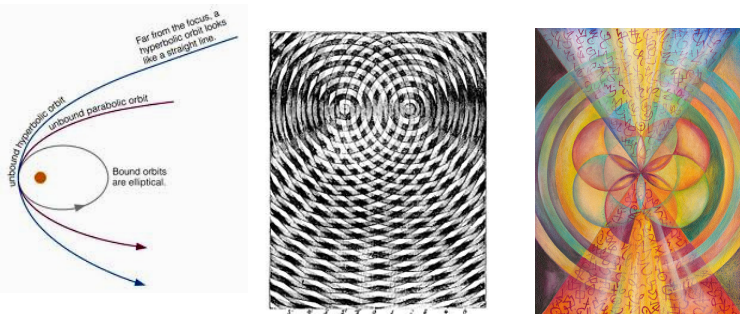
and we helped him hoe and weed the tiny sprouts that soon appeared in long neat rows. With "the ripening of the fruit in Leo", we helped harvest the beans, corn and tomatoes for dinner or for dutifully "putting up" in canning jars to feed us through the winter. These memories help me to embrace the thought of "the Earth Mother, Eve, as all that is holy", again and again yielding up to us continued sustenance, yearly renewing our life in her own "death". Life is resurrected in "every herb bearing seed", and as a result of my commitment, in part through these monthly articles, to live more consciously into nature's happenings day-to-day, I can understand with more depth of feeling the Virgo Virgin Mother as "the coming of the Christ's Etheric Being into the Earth's aura to become the new Lord of Earth, [the new tiller of seed of continued] human evolution." From the primitive glyph depictions to modern mathematical abstractions, we see movement in the etheric world toward the regeneration of form. In their depiction of the etheric forces that shape the plant, Adams and Whicher convey the fructification of the etheric into matter through an inversion of conical "templates" (see below) touching down to earth. Leo is opposite Aquarius on the Zodiac circle. We can see that whereas the parabolic plane of Leo-Aquarius cuts through only one half of the conic structure to make contact with the earth, the hyperbolic plane of Virgo directly opposite Pisces cuts through both halves of the structure as Heaven and earth come into a new alignment. Leo-Aquarius is the "plane of will" separating us materially from our past. And now for the first time since Pisces brought us into a form that is capable of separating from the cosmos, Virgo allows for creation on earth.



The quadratic equation of the Leo-Aquarius parabolic plane mathematically maps a "grid"-connection between spirit and it's material incarnation, in dynamic relationship. Now the Virgo-Pisces hyperbolic plane presents us with a second-degree equation, a plotting or mapping that captures our perception of space as beginning to show signs of transcending its previously bounded Euclidian/ Cartesian parameters in yet again new ways, which bring it into the realm of creation in its own right, on earthly terms, yet guided by heaven.

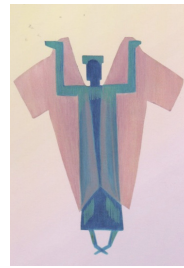
The word "hyperbola" derives from a Greek word literally meaning, "a throwing beyond". A hyperbola is similar to a parabola, an open curve or "unbound orbit" that continues indefinitely to infinity, rather than closing on itself like an ellipse (see picture below). Unlike the parabola, however, several other curves can be derived from the hyperbola by inversion, and by its inverse curves. If the center of inversion is then chosen as the hyperbola's own center (be it a seed or an umbilicus), the inverse curve is the lemniscate of Bernoulli; the lemniscate is also the envelope of circles centered on a rectangular hyperbola and passing through the origin.

So the lemniscate, like any other hyperbola, can be aligned with its center at its origin and with "arms" resembling two infinite bows, that as mirror images of each other, open east-west (sunrise and sunset) (see picture below). Hyperbolas are also produced by "interference waves", a relationship phenomenon usually referred to in physics as the interaction of two waves that are coherent with each other, either because they come from the same source or because they resonate with each other. Like the processes of the Virgin creation, the two waves interact to form a third of greater (or lower) amplitude—giving birth to something within the earth, that arises from an earthly vehicle (be it a seed or an umbilicus), yet comes into form as a "virgin birth" through resonance with the guiding forces of the heavens above.



SOUND GESTURES: Virgo's "P" and "B" sound gestures show us the conical descent of the heavenly etheric ("P") and its resonant incubation in earthly form ("B"). They alternate as the fruiting and seeding resurrection- processes that occur within the soul through the seasons. The soul is the bearer of our consciousness. In the eurythmy pictures below, the "P" gesture is captured as it resounds in the seeding activity in the deep blue enclosure of night that occurs during our sleep, when our soul and spirit unite in us metabolically with the spiritual forces of the outer cosmos. And the "B" gesture shows the color yellow radiating like the Sun, resounding from the fruiting activity in the counterspace of our internal organs

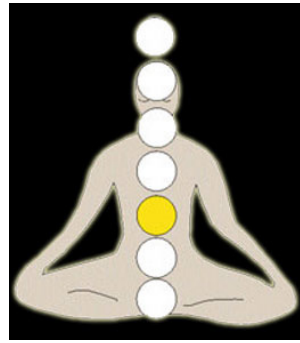
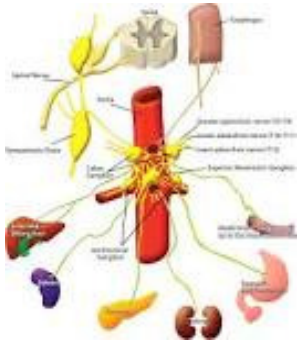
during day-consciousness when it's subjected to the workings of the darkness of our inner cosmos.



Finding for ourselves a true balance between the polarities of light and darkness is the art of living, in an act of perpetually "rebirthing" ourselves. Self-reflection provides the only time the Ego can penetrate our day-consciousness, but we generally give very little deliberation to the worldly impressions we receive and the reflex actions that "incubate" in us. Steiner speaks of this dynamic: "From the direction of the East, it is a matter of strengthening...the in-streaming and actively working beings from the opposing sides of the cosmos, placed at the service of earthly existence. A great struggle will arise in the future. Human science will attempt to move toward the cosmic but in different ways. It will be the task of the good, healing science to find certain cosmic forces that, through the working together of two cosmic streams, are able to arise on the earth. These two cosmic streams will be those of Pisces and Virgo. It will be most important to discover the mystery of how what works out of the cosmos in the direction of Pisces as a force of the sun combines with what works in the direction of Virgo. The good will be that one will discover how, from the two directions of the cosmos, morning and evening forces can be placed at the service of humanity: on the one side from the direction of Pisces and on the other side from the direction of Virgo. *From "The Reappearance of Christ in the Etheric: Lecture XII)*

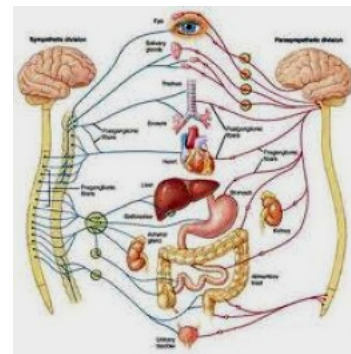
BODY PARTS: As the human body evolved through the ages, the Virgo forces provided us with the "Virgin Mother" aspect of a completely isolated interior space containing the abdominal organs (stomach and intestines, liver and spleen), yet in deep resonant connection with the cosmos. Only when we realize we are living at the surface between light and darkness can we then begin to understand our inner abdominal organs, the cosmic vision from which they derive, and the cosmic vision to which they aspire anew. What goes on in the depths of our inner organ systems, our "gut responses", comprises our inner world of latent soul tendencies. Often referred to as the "abdominal

brain", with no connection at all to the outside world, these organs are all metabolically active with corresponding unconscious memories gathered during sleep. The inner organs are interconnected through a radiating pattern of interweaving nerves, visible as the celiac ganglion in the physical anatomy and also as the solar plexus in the dynamic energy anatomy in the pictures below.



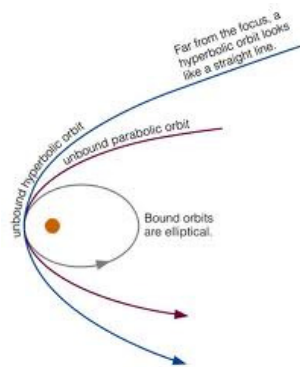
Before the Ego can take hold of the physical body, as a constantly renewing growth process, it has to ensoul its forces within the streams of etheric (life) and astral (soul) bodies by pouring itself into our senses and working through sources of nourishment flowing in the blood from below upward to our head. Our individualized etheric body materialized in our "Waterman" form when it reached dynamic accord with nature in Aquarius, but it is never fully formed. Rather the etheric-fluid processes continuously serve as the medium for Spirit to work in our eyes and ears, in every bodily sense, to create all aspects of our consciousness boundaries. These boundaries are the etheric spaces for our soul, as bearer for the Spirit, to become more deeply embodied within us. The warmth of "Sun-inside-being" in Gemini brought on the sulfur absorptive process of ripening in all of nature, to hold the sun in the physical, to use up the physical and destroy it. Sulfur is referred to in the Bible as *brimstone* (burn stone). As part of this fiery ripening process in man, the Gemini forces opened up our human senses to worldly things as a continuing reflection of the Sun's radiation. We experience ourselves, our own inner light and warmth, in and through the sulfuric processes of our digestion. With the intermixing of Spirit Light and the warmth of Matter (or "Mother", etymologically) comes a balancing in the urge to absorb with the urge to push up/out. As we descend into spirit-permeated matter, we become "light carriers" aspiring to the heights, even in our own physiological processes. For when we consciously take hold of ourselves spiritually here on the physical plane, the Gemini H-gesture resounds in the iron compound that simultaneously forms in our blood cells. The dark density of iron in our blood holds the

warmth and contains the light of our consciousness. To be perceived, to have consciousness, light must arise from darkness. In the nerve-anatomy diagram below, an eye appears at the top. The archetypal eye, a kind of inner sight, formed in the highly rarefied Light Ether, in the first densification of "earthly matter", in the Old Saturn stage of human evolution. Our power of physical sight as we know it today took form much later, when our spiritual gift of clairvoyance and power of conscious memory were withdrawn so that our ego could develop. But our primordial power of sight originated here, on Old Saturn, our first "cosmic eye" defined in its "orbit" by its delineation of an inner and outer realm. Light developed by the light for the light to emerge within us as ego consciousness.



In the same way today, spawning within the metabolic darkness of our organs lies our capacity for giving birth to a greater spiritual consciousness and vision. The Virgo Virgin forces continue to nurture our sense of sight as a soul (astral) body experience of inner vision as we develop our spiritual sense organ, the ten-petal lotus or third chakra, that lies within our solar plexus. With butterflies or a sinking feeling in the pit of our stomach, we self-reflect to determine whether or not we may turn outward with the courage of "in-sight". And as the alternating red (coming toward incarnation) and blue (moving away from incarnation) blood-flows carry our more enlightened sentient-soul experiences in greater conscious balance, we become better able to avoid the arbitrary spiritual illusions and fantasies of mindless living. If our powerful outer sense-impressions continue to dominate us, however, then our soul life remains imprinted with associations we've made from unconscious impressions of people who resemble those in our past or from events we once noted subconsciously. A particularly intimate kind of inner training in the initial stages of clairvoyance involves learning to recognize the sense-impressions as a source of illusions, fantasies, sudden ideas and memories, and to consciously control the senses so that the hidden talents and faculties of others may be seen in new light.

CULTURAL EPOCH: The workings of the Virgo Virgin took place for the entire Earth "in the Beginning..." during the Old Saturn state of evolution, providing the archetypal formation of the abdominal organs of the lower human trunk, as a soul space or "inner cosmos" through which the Christ Being would enter the physical body of Jesus. Before the Ego can take hold of the physical body, as a constantly renewing spiritual growth process, it has to ensoul its forces by pouring itself into our senses, and working through all our sources of nourishment. The moment our Ego sense is insulated or dominated by our nerve-sense impressions, a "dragon" slips in through the shadows of matter, enters into the nerves that govern our will formation and takes over what should be under the control of our Ego. By mastering conscious control of our physical sense organs, acquiring a kind of "soul armor" against anything we don't choose to focus on, our spiritual sense organs can evolve, and then everything around us begins to manifest its "color aura", its soul-like qualities. As our heart senses variations in the blood flow from the digestive processes, it functions differently in the time of Virgo than that of Aquarius. There was a time when people felt this instinctually, and they celebrated "Michaelmas", which falls on September 29th this year, as a way to observe their heartfelt initiative, their soul courage to overcome fear and anxiety, in order for their physical body to gain the kind of strength St. Michael displays in his mastery over the dragon in this painting by Raphael. Just as the straight line of his sword carries spiritually driven will-forces into action, with the sword of our iron-rich blood, the instrument of our consciousness, we too have the capacity to slash with insight through all our illusory encounters. With spirit-guided vision, see how St. Michael's actions, emanating from torso, winged heart and limbs wielding the sword over the dragon and its shadow, form unbound hyperbolic orbits. With the intersecting lines of his red cross, here as "seed", Michael's sword, in conjunction with his raised leg, descends as plow to cultivate the earth below to receive the heavenly form.



As Steiner put it, "...as the bluish-yellow sulphur-phantom rises in clouds from the nerve-system in the lower part towards the brain, the iron-forming process rays out from his head and pours itself like a stream of meteors into the blood. We see the Dragon in shimmering clouds of radiance, his body forming out of streams of bluish-yellow sulphur-vapours. And the space above, where Michael overcomes the Dragon, is filled with showers of meteoric iron which take form not as clouds of indifference but as a powerful sword that streams out from Michael's heart....We can understand these things only if we recognize how the sulphur-process and the iron-process in man are connected with corresponding events in the cosmos. And when...from a particular constellation, meteors fall in great showers of cosmic iron, which carries an enormously powerful healing force, then this cosmic iron is the weapon which the gods bring to bear against Ahriman [the hardening, rigidifying forces of materialization], as dragon-like he tries to coil round the shining forms of men. And this majestic display in cosmic space...has its counterpart in a change—so gentle and apparently so small—that occurs in the human bloodwhich is in truth not such a material thing, but is permeated throughout by impulses from soul and spirit.... The processes which are set going in every human blood-corpuscle, when the anxiety-dispelling force of iron shoots into it to drive anxiety, fear and hate out of the blood, are the same on a minute human scale, as those which take place when meteors fall in a shining stream through the air. And this inner fall of miniature shooting-stars is especially important when autumn approaches, when the sulphur-process, pointing to the life of the blood, is at its peak..."(**Lecture I of *Four Seasons and the Archangels: The Michael Imagination***). In the progression of the equinox, then, when the Sun stood in the sign of Virgo, our blood-flows began to carry our more enlightened sentient-soul experiences in greater conscious balance, so that we could become better able to avoid the arbitrary spiritual illusions and fantasies of mindless living. Then cosmic forces could then become the self-directed movements (freedom of choice) in the human form through the activity of the Ego in the blood.

WORLDVIEW: Phenomenalism is the view that physical objects don't exist in themselves, but only as perceptual phenomena or sensory stimuli in a context of time and space. Rather than talk about physical objects in the external world, then, phenomenism talks about collections of relational (evolving/unfolding) sensory information as being as much an event as a thing. The Phenomenalism of Virgo holds that soul-

spiritual aspects can also be sought within the sensory world, through inner reflections. The "pure" phenomenalist might contend that colors and sounds arise as phenomena related only to processes in our eyes and ears. Yet when we allow the light and color nuances of things to shine through as experiences deep in our soul, without preconceived ideas, we can realize there is more to reality than the images we perceive. A phenomenal rainbow, for example, can become the "soul of the world" for us when we can see light and color as both a boundary and a bridge between our world and that of the creating spirits. Our perception of space then begins shifting from its previously Euclidian/Cartesian mappings, to be grasped in new ways, as those same parameters were themselves once initially grasped.

Since the late 13th century, we have increasingly shaped our world in the straight lines of walls, doors, buildings, streets, etc. When we read our world like a text, and it in turn reads us, its carpentered cultural and physical intermediaries of linear geometric proportions shape what and how we see. Our scientific theories, for example, become knowledge by transformations of our perceptual frameworks. But what we know is not limited to a unique privileged perceptual framework. We can have access to a multiplicity of possible perceptual horizons. We can have access to a multiplicity of possible perceptual horizons. A hyperbolic perceptual field constitutes an expansion of our visual parameters, as well as a more comprehensive integration of peripheral vision. Such an "opening" of vision, in its increased capacity for sensually accessing the part (foveal vision) as a greater reflection and engenderment of the whole (peripheral vision), can signal a greater balance within ourselves, as well as a more flexible space/time relationship with our environment.

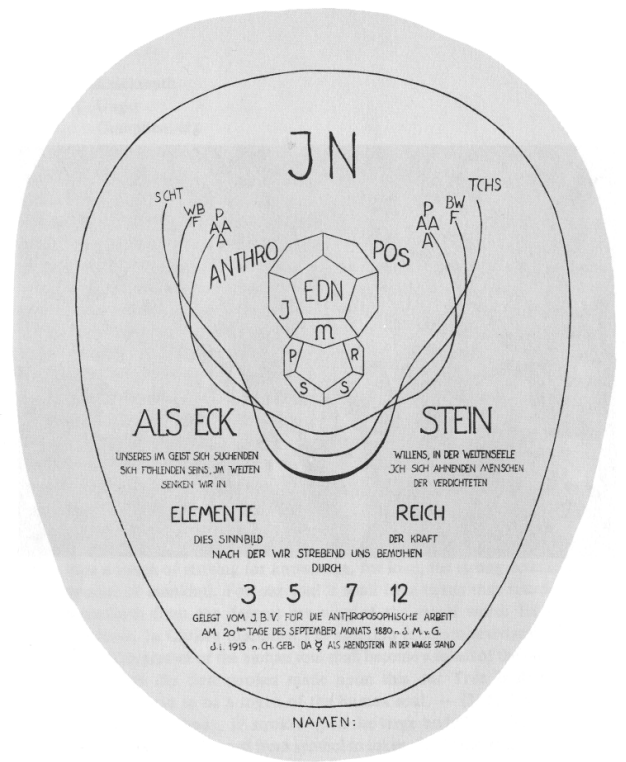
The Twelve Moods – Virgo

Behold the worlds, O Soul!
 Let the soul take hold of worlds,
 And the spirit lay hold on beings.
 Out of life's powers take action,
 In will's experiencing build,
 In cosmic burgeoning trust.
 O soul, comprehend the beings!



Remembering One Hundred Years Ago on September 20th

On September 20, 2013 it will be one hundred years since Rudolf Steiner laid the foundation stone for the first Goetheanum building. For this 100th birthday I want to recall a few lines from Rudolf Grosse's book *The Christmas Foundation: Beginning of a New Cosmic Age*. It is a book that should be read in full to do this event justice.



The Foundation Stone document drawn by Rudolf Steiner. Length 130 cm, width 90 cm.

The Foundation Stone document drawn by Rudolf Steiner. Length 130 cm, width 90 cm.

This foundation stone is a double dodecahedron made from sheet copper. Its double twelve-foldness is an image of the striving human soul, a microcosm planted in a macrocosm. Into the container of sheet copper was inserted a document, a parchment of male calfskin. On it Rudolf Steiner had drawn three waving lines representing the Hierarchies weaving around the dodecahedron. This relationship could suggest that they are listening or watching the double dodecahedron, that they are aware of the intentions behind it. This dedication expresses the intentions of a human being who wills to seek himself or herself in the spirit and who senses himself or herself in the world I. At the end of the dedication ceremony Rudolf Steiner spoke: "My dear sisters and brothers, Let us understand that this deed really signifies a vow for our souls. Let us try to make this vow in our souls. Let us try in this moment to awaken in ourselves the thought

of all that links the human soul with the striving of The Turning Point of Time. Let us try to put ourselves in to the position in which we really ought to be, lifting our souls to the great plans, the great purposes of man's activities on earth."

You may know that the first Goetheanum was consumed by fire over New Year's 1922/1923. After this tragic event occurred, Rudolf Steiner and all the activities around him continued forward uninterrupted. The foundation stone was not consumed and continues its task under the second Goetheanum that stands today. Rudolf Steiner recognized the transformation of the first Goetheanum in fire and at the Christmas Foundation Meeting in 1923, laid the spiritual Foundation Stone into the hearts of members present. The interesting thing is that this foundation stone is contagious in a good way and can find its way into the hearts of all who have an interest and love for Anthroposophy.

You may want to consider this bit of history as September 20th approaches this year.

~Respectfully submitted by Jannebeth Röell.



On the Work of the Archangel Michael

By Ita Wegman, M.D.
(1876-1943) Doctor, Founder of
the clinical-therapeutic institute in
Arlesheim, Switzerland

Why is it that the hearts of those who have a sense for spiritual things beat more quickly whenever the name of Michael is uttered? Such people feel in the depths of their hearts that Michael is a Being who has performed a deed without the fulfillment of which humanity must have proceeded further and further along a path leading to the edge of an abyss. Just as Christ performed a deed through which He gained the victory over death, so Michael, by another deed, has made it possible for man to save himself from complete hardening in material existence. When we find old pictures representing Michael warring with the dragon, we must recognize in this dragon that influence which seeks to drive man into earthly hardness and rigidity. It is this influence with which Michael does battle. In him, therefore, there is no element of hardness, only goodness, beneficence and infinite mobility.

This hardening process which is to be observed in the

course of evolution, and from which Michael seeks to guard humanity, is due to the fact that the world to which man belongs is less and less permeated with the forces of the Gods. They, the divine-spiritual Beings, have now withdrawn from the visible world of sense. For this reason the world has come to be described as it is by modern physics. Because man believes this 'god-forsaken' world to be the only one, he falls a victim to that hardening process of which mention has been made. Michael is the Being who will not forsake man and leave him to go his way in this hardened, materialized world. Whereas the other divine Powers withdrew from man, Michael has followed him as a faithful companion, regarding it as his task to free man from the entanglement of matter, and to guide his capacity for knowledge in such a way that it becomes once more a knowledge of the Spirit. Just as Christ, the sublime Sun-Being, united Himself with the earth at the moment of the Mystery of Golgotha in order that He might give to the earth the possibility of a future, spiritualized existence, so it is the mission of Michael to illumine the forces of knowledge in man. Michael brings to human knowledge that illumination which makes it possible truly to understand the deed of Christ, and the Guardian of the Mystery Schools throughout the ages.

This piece was written as an introduction to the collection of legends published under the title *Aus Michaels Wirhen*, by the Orient-Occident Verlag, Stuttgart - The Hague - London.

The complete introduction is available at the site below, and continues with a description of the development of human thought over the ages.

http://www.rsarchive.org/RelAuthors/WegmanIta/On_work_of_Michael.php



St. Michael from the Gaelic Prayer *Michael the Victorious*; by David Newbatt, Wynstones Press

Portland Branch Calendar

September 2013

Portland Branch Council Meeting

Monday, September 9, 7-9 pm • **note location change for this meeting: 3609 SE Center • Contact Tom & Ruth Klein, 777-2901**

All Branch members are welcome to attend, and/or to call us with agenda items, proposals, suggestions, or to observe. Meetings are on the second Monday of each month.

First Class of the School of Spiritual Science

September 8, 9:30 am sharp • Bothmer Hall, 5919 SE Division St, Portland, 97206, Contact Diane Ramage at 971-271-7479 or Cheri Munske at 503 772-2632 Blue card required. Second Sunday of each month

Thomas Meyer on Three Important Topics: The Michael School; The Twelve Word Views; and The Temple Legend

Friday Sept. 13, *The Temple Legend and its Completion by Rudolf Steiner*; Saturday Sept. 14, *The Twelve Cosmic Viewpoints*; & Sunday September 15, *The Michael School* • 7:30-9pm • Bothmer Hall, 5919 SE Division St., Portland • \$15/lecture, \$40 all three evenings; Portland Branch members \$12/lecture, \$36 all three evenings. Pre-registration not required. No one will be turned away because of finances. • For more information contact Tom Klein at 503-777-3176 or tgklein@aol.com

The **Friday** lecture will take a look at the legend which touches upon the mystery of evil and its transformation into a higher good. On **Saturday**, both examples and exercises of the twelve cosmic views and seven cognitional moods will be considered. The purpose will not be to gather theoretical information, but to make our thinking both more exact and more versatile, which can become the basis of the social tolerance which is needed so desperately today. On **Sunday** we will look at three phases of the Michael school, and consider the question: How should we relate today to the class lessons?

Paint Your Way Into the Darkness with Robin Lieberman MSW, Painting Therapist

Saturday, September 21; 10:00 am – 2:00 pm • Studio 901, 1410 SW Morrison Street, Portland • \$50 includes materials, instructions, refreshments • Contact: Robin Lieberman 503-222-1192 robin@robinlieberman.net

A Seasonal Painting Celebration of the AUTUMN EQUINOX. Cultivate your inner light of wisdom and courage as the light fades to darkness and bring balance, harmony and health into your life with COLOR.

Michaelmas Painting Workshop: A Passion for Color, with Cheri Munske

Saturday, September 28, 10 am – 2 pm • Bothmer Hall, 5915 SE Division St. • For questions and to register contact Cheri at 503-484-4133 or woolhorse@mindspring.com .

German Expressionist painter Emil Nolde brought a Michaelic impulse into the world through his pioneering artistic work. The workshop will include a biography of Nolde and painting exercises based on his South Sea sketches. \$55 includes materials and snack.

In Search of the Michael Impulse – Michaelmas Observance

Sunday, September 29 (Michaelmas), 7pm • Bothmer Hall, 5919 SE Division St. • contact Timothy Popoff, timothy@efn.org

All Souls Observance

Saturday, November 2, 7:30 pm • Bothmer Hall, 5915 SE Division St. • For more information or to get involved contact Valerie Hope, valerieannhpdx@aol.com

Second Annual Veil Painting Workshop in Manzanita in Honor of All Souls Day with Robin Lieberman MSW, painting therapist

November 1-3, 2013: Friday, 7-8:30 pm; Saturday, 9:30 am – 5 pm, Sunday 10 am – 2 pm • Manzanita, Oregon • \$150 for all 3 sessions • Some shared housing available, sliding scale \$25-\$50/night Contact: Robin Lieberman 503-222-1192 robin@robinlieberman.net

“When the veil between the two worlds is thinnest.” Three sessions beginning with photos of the dead and candles to inspire, all day veil painting and final session to complete work; interspersed with walks on the beach, enlivening conversation or quiet contemplation.

Beginning Anthroposophy with Tom Klein

Wednesdays October 2 through December 11 (except November 27), 7:30 pm -9pm • place tba • Cost \$60 including text • contact Tom at tgklein@aol.com

This class is for those who know little or nothing about Anthroposophy. They may not even be able to pronounce it. The class will provide an overview of the basics with suggestions for further study.

Easter Sunday Observance

Sunday, April 20, 7:30 pm • Bothmer Hall, 5915 SE Division St.

Ongoing Local Activities and Study Groups**Council Meetings of the Portland Branch • Second Monday of the month 7-9 PM**

2606 SE 58th Ave., Portland • Contact Valerie Hope, (503) 775-0778, valerieannhpdx@aol.com

All Branch members are welcome to attend, and/or to call us with agenda items, proposals, suggestions, or to observe.

In Search of the Michael Impulse – First Monday of the Month

Starting 9/2, 7:45 pm • Bothmer Hall, 5915 SE Division St • Contact Timothy Popoff, 503-758-6481 or timothy@efn.org

Sponsored by the Portland Branch. We will work with material from *Anthroposophical Leading Thoughts*.

First Class of the School of Spiritual Science • Second Sunday of the month

9:30 am sharp • Bothmer Hall, 5919 SE Division St, Portland, 97206 • Blue card required. Contact Diane Ramage at 971-271-7479 or Cheri Munske at 503 772-2632

First Class Study • Second and Fourth Tuesday of the month • Blue card required

7:30-9pm • Contact Tom Klein, 777-3176, Tgklein@aol.com.

This group works with the contents of the First Class.

Anthroposophical Course for Young Doctors • First Tuesday of the month

7-8:30 pm • Pohala Clinic, 12050 SE Holgate Blvd. • contact Julie Foster 503-572-4196, julie@pohalaclicnic.com

Karmic Relationships Study • First and third Thursday of the month

7-9:30 pm • Contact James Lee, 503-249-3804, anthroposophy@earthlink.net

The study group will continue working with lectures from the Karmic Relationships lecture cycle and applying Rudolf Steiner's karma exercises.

Singing Classes with Vladimir Baba • Friday Evenings

7 pm – 8 pm • Bothmer Hall, 5919 SE Division St, Portland, 97206 • \$40 per session • contact Vladimir Baba at 503-515-1771 or email hildago6@me.com Vladimir will return to Portland after Thanksgiving

Vladimir will be offering singing classes to members of the Portland Branch, or anyone else in town interested in cultivating their God-given instrument, the human voice. He is a classically trained singer and over the years has performed operatic and art song works of the masters world-wide. He has also given numerous performances as fund-raisers to benefit Waldorf Schools and other not for profit institutions throughout the world.

Mystery Dramas with Speech-Formation Exercises – 2nd & 4th Wednesdays

7:30-9:00 pm in SW Portland • Starting anew on March 13, 2013 with Steiner's 4th Mystery Drama, "The Soul's Awakening" • Beginners Welcome • Contact Diane Ramage by e-mail at drumage@comcast.net or by phone at 971-271-7479

Portland Waldorf School Community Choir • Friday Mornings

8:45-10:15 am • Portland Waldorf School, 2300 SE Harrison St., Milwaukie, in the Orchard Room Free. Contact Marion Van Namen, 503-956-4046

Exciting New Eurythmy Course is Forming! With Jolanda Frischknecht

Please see the Micha-el Institute, www.Micha-elinstitute.com for times (Tuesday evenings and one weekend a month), place, tuition, registration • feel free to call or email with any questions: jolandafrischknecht@hotmail.com , 503-896-3345

In connection with the Micha-el Institute Jolanda is offering an Adult Eurythmy Class (Eurythmy Foundation Studies). This class is for those who have done Eurythmy for some time and want to deepen their experience and dive into the eurythmical movements more intensively. Sessions will consist of both Tone and Speech Eurythmy, exploring and deepening the basic elements as well as entering together into an artistic process of expressing poetry and music through the wonderful enlivening and meaningful movements of Eurythmy. It is Jolanda's hope to build a group dedicated and committed to working together over the whole school year! She hopes that many of you will join this new endeavor!

Waldorf Education and Teacher Training Lectures and Courses

Conducted throughout the year by the Micha-el Institute. Contact John Miles, 503-774-4946 johncmiles@usa.net

Waldorf Teacher Education, Eugene

September-June • Eugene Waldorf School • Now enrolling for September, 2013 Foundation Year Contact Lee Ann Ernandes @ message phone, 541-686-9112

Preparing Waldorf teachers for their future vocation since 1990.

Hear Ye! Hear Ye! (Shepherd's Play Update)

Calling all able folk to join in a traditional seasonal pageant – The Shepherd's Play – the story of the birth of the Child of Light told simply in verse and song. The cast of players is coming together. We are still looking for shepherds and innkeepers and those that want to sing in the merry chorus at intervals throughout the play. Contact Sandra or Wes Burch 503 353-1818 or galenalyn@gmail.com. Don't miss your chance to be part of this humble vignette celebrating the Nativity.



The **Portland Anthroposophic Times** is published monthly to serve Branch members and friends. To learn more about the Portland Branch of the Anthroposophical Society, contact Diane Rumage at 971-271-7479.

To submit an article or a calendar item, email it to both Valerie Hope, valerieannhpdx@aol.com and Wes Burch, truelion@comcast.net. The deadline for submissions is the 15th of the month. Items selected for publication may be edited for style, content and length.

To sign up for our email list, or contact the Branch Council, go to <http://www.portlandbrnch.org/contact>

Newsletter co-editors are Wes Burch & Valerie Hope, Seth Miller is our webmaster, and Ruth Klein is our accountant.

The newsletter and calendar are posted on the Branch website, www.portlandanthroposophy.org. Paper copies are available at the Takacs, Pohala and Healthbridge Clinics; and the Cedarwood & Portland Waldorf Schools, and Swallowtail School. **The newsletter will be online only in August**

The Portland Branch thanks the following Members & Friends for their Dues and Generous Donations in 2012-13!

Cyndia Ashkar, Chrystal Brim, Sandra Burch, Wes Burch, Lesley Cox Yvonne DeMaat, Mia Ellers, Ron Ennis, Sacha Etzel, Charles Forester, Valerie Hope, Lauren Johnson, Marsha Johnson, Tish Johnson, Bob Kellum, Ruth Klein, Tom Klein, Kathy Kremer, James Lee, Robin Lieberman, Regina Loos, Cheri Munske, Robin O'Brien, Donna Patterson, Timothy Popof, Padeen Quinn, Jeff Rice, Walter Rice, Jannebeth Roell, Twila Rothrock, Diane Rumage, Chiaki Uchiyama.

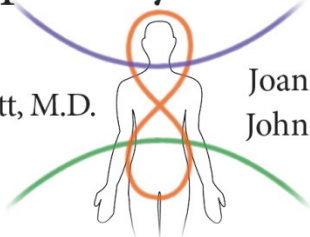
**Please submit your Branch membership dues (\$50) each January, or your donations, to: The Portland Branch
c/o Ruth Klein, 3609 SE Center, Portland, OR 97202**

Multi-Specialty Health Clinic

Susan Schmitt, M.D.

Joan Takacs, D.O.

John Takacs, D.O.



The clinic offers alternatively extended medicine including Physical Medicine and Rehabilitation and Comprehensive Family Practice. The physicians utilize holistic principles that include the Anthroposophical world conception and its medical modalities, movement principles from Spacial Dynamics®, Feldenkrais®, Intermuscular Stimulation (IMS), Musculoskeletal Ultrasound and refined hands-on techniques to augment alternative and mainstream medical approaches in diagnosis, treatment and prevention of illness and injury including work related injuries, personal injuries, motor vehicle injuries and sports injuries.



5909 SE Division Street
Portland, OR 97206

www.anthroclinic.com

503-234-1531



Marta Hammel, Oregon Broker

Cell 503 536 5065

Office 503 670 9000

Fax 503 670 9004

Marta@PremierePropertyGroup.com



Pohala provides family primary care using anthroposophic medicine.

Julie E Foster, MSN, FNP

12050 SE Holgate Blvd.

Portland, OR 97266

503.572.4196

pohalaclinic.com

Pohala
A Place for Healing

curative painting and collaborative psychotherapy for individuals and couples

Robin Lieberman
MSW, LCSW

503.222.1192 robinlieberman.net



Walter Rice, CTC
Travel Magician

5316 SE Sherman St.

Portland, OR 97215

800-328-7266

503-233-4053

fax: 503-232-7224

Incredible Journeys Since 1975

walter@waldorftravel.com

**You can help support the Portland Branch
of the Anthroposophical Society**

and

See your business card sized ad here

by contacting

<http://www.portlandbranch.org/contact#3>

Embryo In Motion: Understanding Ourselves as Embryo

4-DVD Set Now Available With Jaap van der Wal, PhD, MD

This beautiful 4-DVD set was professionally recorded live in Portland, OR, June 3–6, 2010.

To learn more about the 4-DVD set and for instructions on how to order it, go to the “shop” portal on the Portland Branch website at www.PortlandAnthroposophy.org.

Three Evenings with Thomas Meyer!

September 13, 14, 15, 7:30 pm - 9 pm
Bothmer Hall, 5919 SE Division St., Portland, OR

\$15/lecture, \$40 all three evenings; Portland Branch Members \$12/lecture; \$36 all three evenings.
Pre-registration not required. No one will be turned away because of finances.



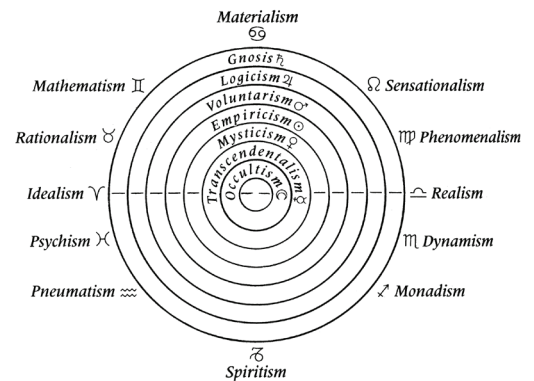
Friday, September 13: The Temple legend and its completion by Rudolf Steiner

This lecture will take a look at the legend which touches upon the mystery of evil and its transformation into a higher good. Hiram, its central figure, has to penetrate into the interior of the earth to find Cain as he was before he became a murderer. Cain had been in a state of readiness to sacrifice, which was perverted into the desire to kill. This original Cain's state is to be regained by us.

Saturday, September 14: The Twelve Cosmic Viewpoints

There are 12 possible world conceptions, and seven cognitional moods through which we gain knowledge.

We will consider both with examples and exercises. Our purpose will not be to gather theoretical information, but to make our thinking both exact and versatile. Such versatility can become the basis of the social tolerance which is needed so desperately today.

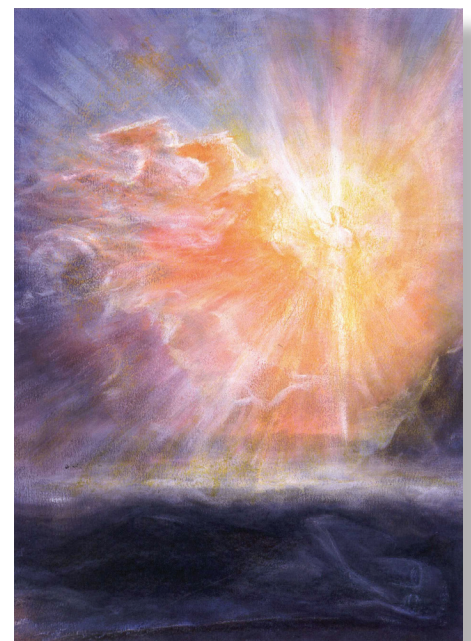


Sunday, September 15: The Michael School

We will look at three phases of the Michael School: The purely supersensible school existing through centuries in the spiritual world and culminating in the cosmic cultus around the turn of the 18/19th century; the short phase during which Rudolf Steiner incorporated it on earth, giving the class lessons of the Michael School; and the third phase which again started to take place in the spiritual world after Steiner's death. We will look at the question: how should we relate today to the class lessons, which are the earthly documents remaining from the second phase?



Thomas Meyer (b. 1950) is a resident of Basel Switzerland, where he is fully engaged in Anthroposophical work as a freelance writer, author of several Anthroposophical books, publisher (see www.perseus.ch), lecturer and teacher of Rudolf Steiner's legacy of Spiritual Science. Thomas publishes a monthly magazine Der Europaer which includes historical and current events seen from the light of an Anthroposophical world view.



PAIN'T YOUR WAY INTO THE DARKNESS

*A Seasonal Painting Celebration of the
AUTUMN EQUINOX*

*Garner inspiration from St. Michael, angel warrior and brave knight, St. George, and tame your dragon!
Cultivate your inner light of wisdom and courage as the light fades to darkness and bring balance, harmony and health into your life with COLOR!*

Join ROBIN LIEBERMAN, MSW, painting therapist and psychotherapist for this enlivening and reflective session.

Saturday, September 21, 2013

10:00 am – 2:00 pm

in the warm glow of Robin's downtown studio

1410 SW Morrison Street

Suite 901

Portland, Oregon

\$50 includes materials, instruction and refreshments

All adults are welcome; curiosity is the only prerequisite.

robinlieberman.net

503-222-1192

Beginning Anthroposophy

Taught by Tom Klein

Wednesdays beginning October 2nd through
December 11th (except November 27th)

7:30 to 9:00

Place TBA

This class is for those who know nothing or little about Anthroposophy. They may not even be able to pronounce it. The Class will provide an overview of the basics with suggestions for further study.

Cost \$ 60 (text included)

For more information contact Tom at tgklein@aol.com